

American Contract Bridge League District 16 SCORECARD

Bridge News Bulletin for The Texas Regional Conference

San Antonio, Texas

Volume 49 No 6

November/December 2017

David Pennington Wins 2017 Oswald and James Jacoby Service Award

The Oswald and James Jacoby Service Award was established in 1982. It is designed to honor those volunteers who have worked diligently at the Unit level and risen to recognition at the District level after many years of outstanding service. It is District 16's premier Service Award.

Carol Ann Wadley, President of ACBL Unit 233 Central Texas Bridge Association, presented the Oswald & James Jacoby Service Award for 2017 to David Pennington at the Bridge Studio of Temple. The award is given annually for outstanding contribution to the promotion of bridge in ACBL District 16 and is announced at the Labor Day Regional Tournament. The honor is given to someone who has worked diligently at the unit level and has risen to recognition at the district level. Pennington directed the 0-500 game for ten years and served as club manager for the Sul Ross club in Waco for five years. He has served on the unit board, been unit president, served ten years on the District 16 Board, was 2nd Vice-President in 2014 and taught bridge classes several times. A committee consisting of past

recipients of the award review nominations from the fifteen units in District 16 and select the winner. Pennington has organized and chaired the Temple sectional tournament three times and for



over twenty years has lined the walls at unit Christmas parties, tournaments and club games with hundreds of decorations made from used and recycled playing cards. With so many people sending him their used cards he was able to donate over 500 decks to the NCO club at Fort Hood in 2017.

Lights! Camera! Bridge!

Aces & Knives, a forthcoming documentary about bridge, is trying to raise money to help finish the film. Aces & Knives is about points, partners, and proving our mettle, told by world champions and mere mortals alike. Click here to see a very short trailer narrated by bridge legend Zia Mahmood. If you're interested in donating to a film that is for and about all of us, please email the director at pare.jackie914@gmail.com for more information. You can also contribute to Aces & Knives LLC PayPal account (click here to contribute on Paypal). We will thank you in the credits!

Texas Supports "The Longest Day"

In keeping with District 16's long time charitable efforts three Texas teams were among the top 40 in the ACBL to raise money for "The Longest Day. The money raised is used to help fight Alzheimer's disease.

Seventeen in the country with almost

\$11000 raised was the Granbury bridge club.. The Beaumont bridge studio raised almost \$8000 and The Westside Bridge Academy in Houston raised over \$6000. Many other clubs and Units have done great jobs. In past year's both the Austin club and BAND in Dallas have raised over \$40000

Unit 201 has donated almost \$30,000 for Alzheimer's care and research. A highlight of this year was the fish fry for lunch. Jerry and Susan Gore do-

nated almost 100 pounds of fish filets, and Jerry and Bill Worsham fried the fish on-site to perfection, in spite of the close proximity of a tropical storm. In addition to luncheon ticket sales, members bought top players, named games for loved ones, purchased silent auction items, participated in the morning and afternoon games, and made individual donations. It was a special day at the Beaumont Bridge Studio, coordinated by Carolyn Worsham for the fifth year.



Beaumont's "The Longest Day Team"

Go Away Cruises Are Back!
See ad on Page 4.

AMERICAN CONTRACT BRIDGE LEAGUE

DISTRICT 16
SCORECARD

Bridge News Bulletin for
The Texas Regional Conference
10710 Tybalt Trail
San Antonio, TX 78213

Oswald and James Jacoby Award Winners

2016 Paul Cuneo, Houston
2015 Charles Price, Dallas
2014 Martha Decou, Corpus Christi
2013 Carol Schoenhals, Lubbock
2012 Lew Levy, Houston
2011 Larry Davis, Austin
2010 Tom Corlett, Waco
2009 Bert Onstott, Houston
2008 Ira Hessel, San Antonio
2007 Dewitt Hudson, Fort Worth
2006 Rosemary Kelley, Austin
2005 Toni Snow, Houston
2004 Betty Starzek, Houston
2003 Al Lochli, San Antonio
2002 Scott Humphrey, Austin
2001 Tom Hughes, Fort Worth
2000 Mary Ross, Corpus Christi
1999 Arlene Weingarten, Houston
1998 Eric Snow, Houston
1997 George & Leah Olivari, Corpus Christi
1996 Howard Wilkins, Abilene
1995 Barry Hagedorn, Houston
1994 Shirley Pagan, Corpus Christi
1993 Jacque Tucker, San Antonio
1992 Henry Baer, Dallas
1991 Mary Williams, Austin
1990 Gerrie Owen, Dallas
1989 Dan & Joan Morse, Houston
1988 Jim Downs, Houston
1987 Judy Jacoby, Dallas
1986 Cisse Horton, San Antonio
1985 Sue Barber, San Angelo
1984 Ann Carb, Fort Worth
1983 Joyce Cook, Houston

Paul Cuneo
District 16
National BOD



Our San Diego meeting is on all the Board members' minds as we are busy preparing. In September, Bahar Gidwani our CEO released the 10 Big Ideas to the Board, the Board of Governors and the membership for input. I applaud Bahar for taking the initiative to develop them and to get broad input for us to use in evaluating them.

Some have been tried before; some are new. A couple are radical departures from the past policy while others are fine tuning. The Board will be sorting them out and voting on motions in our San Diego meeting.

The Tournament Taskforce has decided to prepare three topics for discussion in San Diego:

Allocation and scheduling of regional tournaments, which will address the thought that we hold too many regional tournaments overall and that when competing regionals try to draw from the same geographic area both suffer and there are opportunities to improve scheduling.

Issues with team events, which will address both masterpoint awards and problems with competition in the top brackets. Many tournaments are experiencing very broad ranges in masterpoints that create dissatisfaction from both the experts and the lower masterpoint teams when they are assigned to the same bracket.

Declining I/N attendance at regionals, which will look at the causes of the attendance decline of the I/N group which accounts for 2/3 of total regional attendance decline over the past two years. I'm assigned to this subgroup. When I meet with the I/N players and ask them about declining I/N tournament attendance, the most frequent comment is that they do not believe getting to Life Master during their lifetimes is achievable, so

they are not travelling to tournaments. The average age of new members has been 65 for the past three years. Looking at the data, the average time to Life Master was about 13 years under the old system, so likely will equilibrate to 15+ under the 500 masterpoint requirements. We've recruited almost 81,000 new members between 1/1/2010 and 12/31/2016, but less than 1000 have become life masters during the 7 years.

The subgroups are looking at a variety of options to address these issues.

In 2016, the Volunteer Taskforce reported that some areas are having difficulty recruiting and retaining volunteers for tournaments and governance functions. Mark Aquino from District 25 and I have been working to produce a webinar on Volunteer Management. Working with Dan Storch, ACBL's Marketing Director, we conducted a survey on the topic which indicates the problem is real and while most Unit and District board members recognize it is their responsibility, their boards do not spend time on the topic.

We will be piloting the webinar during October and hope to have it posted in early November.

An experiment has been approved to try a new concept at Clubs. It is called Regional Tournament at Clubs (RTaC) and will award red and gold masterpoints. For clubs that play The Common Game hands, players may register to play in the RTaC which is a 5 day event, Monday thru Friday. Players must play a minimum of 2 times and may play up to 5 times. It will be treated as a Regional Side Game Series which uses the two highest results for each player to determine the awards. The first experimental event will be in November.

North American Pairs In San Antonio January 20 and 21

Roxie Tom
District 16
NAP Coordinator



in each pair is as follows:

Flight A: 1st \$800 2nd \$500
3rd \$300 4th \$200
Flight B: 1st \$800 2nd \$800
3rd \$500 4th \$300
Flight C: 1st \$800 2nd \$500
3rd \$300 4th \$200

Make your plans to play in the NAP District finals in San Antonio, January 20 and 21. District 16 placed 2nd in the number of tables in play for Flt B at the club level qualifications and received the enhanced subsidies to Nationals in Flight B for the 2017-2018 North American Pairs in Philadelphia, PA. District 16 was also awarded the extra pair in Flight A by placing 1st in the number of A tables playing at the club level in qualifications.

There will be four pairs from A, four from B and four from flight C who will qualify to represent District 16 at the Philadelphia Spring Nationals in March. The district is adding money to the amount ACBL awards. The total stipend for each qualifying player

In addition to financial stipends for the top finishers, all the participants enjoy the best competition available on the district calendar. Any members who qualify to go to the nationals, check with your unit to see if they provide a stipend.

Many thanks to all the Unit Coordinators for helping to promote this great event. As the District finals approach, each Unit coordinator is allowed to make substitutions up to 60% of their field, so if you failed to qualify in your Unit final, there is still hope if a pair ahead of you drops. Stay in contact with your Unit coordinator. If you have any questions please email Roxie Tom D16 NAP Coordinator, rtom85@yahoo.com.

Missing Scorecards and Address Changes

All Scorecards addresses are maintained by the ACBL and not by District 16.

Address corrections can be e-mailed to addresschange@acbl.org or by calling Cindy Wages at 662-253-3140.

ACBL's toll-free number 1-800-467-1623 will accept voice messages 24 hours a day from members wishing to confirm we have the correct address on file.

Include your Player Number, in addition to your address and phone number. If you are receiving the ACBL monthly bulletin and not the Scorecard please point that out.

Unit	Column	Announcement	Results	Pictures
172 San Antonio	5	5	5	6
174 Houston	6	16	Next	Issue
176 Dallas	7	election 7, 8	7-8	9
183 Fort Western	9	10	10	10
187 Corpus Christi	11			
197 Lubbock	11			
201 Beaumont	11		11	11-12
204 Fort Concho	12			
207 Texas Capital	12	12	13	13-14
209 Permian Basin	14			
224 Abilene	15		Next	Issue
225 East Texas	14		14	15
233 Central Texas	15			
237 Magic Valley		15		
353 Wichita Falls	15		5	
205 Western Mexico	12			
Shreveport		3		

NOVEMBER		
Houston NLM 299er		9-12
Austin NLM		11-12
Fort Worth NLM		11-12
PUERTO VALLERTO REGIONAL (Sept 4)		13-19
Athens (Sept 14)	Nov. 30-Dec 2	
SAN DIEGO NABC	Nov. 23-Dec 3	
DECEMBER		
Austin 199er		2-3
STaC 174		4-10
Cuernavaca MX		7-10
STaC 176, 183, 254,205		11-17
STaC 172., 207,233		11-17
McAllen (15)		15-17
JANUARY		
Austin (12)		4-7
Richardson (8)		4-7
Houston 299er		11-14
Denton I/N		12-14
Mazalton		18-21
San Antonio (5)		18-21
NAP San Antonio (5)		20-21
San Miguel de Allende		25-28
Fort Western (10)		26-28
Harlingen		26-28
HOUSTON REGIONAL (16)	Jan 29-Feb 4	
FEBRUARY		
Ajjic		8-11
San Angelo		9-11
Austin		10-11
Puerto Vallarta		14-16
Houston 299er		15-18
Longview		15-17
Corpus Christi		16-18
Temple		16-18
Austin		22-25
SAN MIGUEL ALLENDE REGIONAL	Feb 27-March	
MARCH		
San Antonio		1-4
Richardson		1-4
Lubbock		2-4
McAllen		2-4
PHILEDELPHIA NABC		7-18
Beaumont		8-10
DFW REGIONAL		19-25
APRIL		
Kerrville		5-8
Athens		19-21
Austin 199er		21-22
Houston 299er		26-29
Dallas 99er		27-29

In Memoriam

* Mrs. Wilma G. Bailey, Conroe
 Marilyn K. Christian, Huntsville
 Mrs. Sylvia J. Frank, Victoria
 Carolynne Gibson, Galveston
 Delores E. Jones, Nacogdoches

* Mrs. Ruth M. Naber, Dallas

* Joseph F. Perkovich, Spring

* Karla M. Riddick, Conroe

* Dr. Paul Rothaus, Temple

* Alex Siegel, League City

* Peter Thorne, Waco

* Alan G. Adams, Kingwood

* Peter M. Hanson, Spring

* E. D. Lilly, Bellaire

* Fred A. Rice, Beaumont

* Mrs. Evelyn B. Smith, Belton

* Mrs. Larue H. Stott, Dallas

* Meng-Chr Tsai, Pearland

*Life Master

List is obtained from the ACBL.

Moving Up

174 Deborah Reed	Sugar Land	Life Master	174 Thomas Martinsen	Bellaire	Silver LM
174 Keith Ritter	Houston	Life Master	207 Martha Norman	Austin	Silver LM
254 Barry Berk	San Miguel	Life Master	172 Sandra Press	San Antonio	Silver LM
233 G Nell Carpenter	Woodway	Life Master	172 Victor Press	Shavano Park	Silver LM
183 Stan Carr	Fort Worth	Life Master	173 Abel Pushkar	Mexico	Silver LM
225 Pat Cawley	Tyler	Life Master	174 Betty Schell	Houston	Silver LM
176 Rajendra Dhamankar	Dallas	Life Master	176 Robert Scrimale	Dallas	Silver LM
176 Jerry Frankel	Plano	Life Master	176 Sam Shah	Irving	Silver LM
176 Jack Harkey	Dallas	Life Master	174 Carol Winograd	Bellaire	Silver LM
207 Janet Hawk	Bristol	Life Master	176 George Burcham	Dallas	Ruby LM
183 Liz Jacobson	Fort Worth	Life Master	174 Lucy Hofmann	Kingwood	Ruby LM
174 Brenda Metze	Pearland	Life Master	207 Sharon Hoger	Austin	Ruby LM
183 Jan Mogged	Colleyville	Life Master	176 Joe Pucek	Addison	Ruby LM
207 Nell Sanders	Austin	Life Master	172 Stephen Simmons	San Antonio	Ruby LM
174 Lorita Tipton	Houston	Life Master	233 Andrew Smalley	Waco	Ruby LM
172 Geneva Johnson	San Antonio	Bronze LM	172 Betty Jo Betterworth	New Braunfels	Gold LM
207 Karen Logan	Georgetown	Bronze LM	183 T Jean Kidd	Lantana	Gold LM
254 P Martel	Guadalajara	Bronze LM	176 Stephen Birnbaum	Dallas	Ruby LM
204 David McAfee	San Angelo	Bronze LM	209 Marlene Blumentritt	Midland	Ruby LM
207 Julianne McKenna	Austin	Bronze LM	197 Norma Buchanan	Lubbock	Ruby LM
225 Shreedhara Ramarathnam	Tyler	Bronze LM	176 Truett Cates	Sherman	Ruby LM
173 Jorge Rosen	Mexico	Bronze LM	176 Jo England	Dallas	Ruby LM
207 Gary Anderson	Austin	Bronze LM	176 Nelda Holland	Dallas	Ruby LM
225 Pat Cawley	Tyler	Bronze LM	174 Virginia Melville	Houston	Ruby LM
174 Bill Chamberlain	Houston	Bronze LM	176 Scott Nason	Dallas	Ruby LM
225 Kathleen Holmes	Larue	Bronze LM	176 Leigh Anne Schmidt	Plano	Ruby LM
174 Jeffery Parker	Sugar Land	Bronze LM	174 Carol Wilson	Houston	Ruby LM
174 Wes Peirce	The Woodlands	Bronze LM	172 Gary Anziani	San Antonio	Sapphire LM
176 Karen Roland	McKinney	Bronze LM	174 Clif Capen	Baytown	Sapphire LM
207 Nell Sanders	Austin	Bronze LM	172 Jerrold Harrington	San Antonio	Sapphire LM
176 Jack Schober	Dallas	Bronze LM	172 Roxana Tom	San Antonio	Sapphire LM
174 Bharat Shrestha	Katy	Bronze LM	207 Joe Black	Austin	Sapphire LM
176 Rosalind Smith	Dallas	Bronze LM	209 Charles Grimes	Midland	Sapphire LM
233 Janis McIntosh	Waco	Silver LM	176 Lynne Wood	Richardson	Sapphire LM
237 Robert Neeley	Donna	Silver LM	176 Bill Osborn	Frisco	Diamond LM
225 Barbara Williams	Malakoff	Silver LM	176 John Schwartz	Plano	Diamond LM
207 Jerry Barrett	Austin	Silver LM	174 Mary Anne Woessner	Montgomery	Diamond LM
207 Lucerne Bunch	Austin	Silver LM	176 Suresh Agrawal	Heath	Diamond LM
353 Helen Cash	Wichita Falls	Silver LM	183 David Pearlman	Southlake	Diamond LM
174 Joy Cogburn	Livingston	Silver LM	254 Gonzalo Herrera	Naucalpan	Emerald LM
233 Peggi Kenny	Marlin	Silver LM	176 Mark Bumgardner	Dallas	Platinum LM
174 Bonnie Keough	College Station	Silver LM	176 Marion Gebhardt	Richardson	Platinum LM
174 Daniel Leightman	Houston	Silver LM			

Help get Houston Regional Back to 3000 Tables

"Big Texan", better known as Daniel Jackson from Spring, paid a visit to the Willson Davis, Jr. Election Sectional in San Antonio to promote the Big Texan two-day championship pair game to be held at the Lone Star Regional in 2018. The Big Texan game is an upgraded four-session pair game with cash prizes and large masterpoint awards.

Daniel also let everyone know that the Lone Star Regional needs to have over 3,000 tables of total attendance for the week, otherwise it is possible that one of the district's regional tournaments could be taken away.

The regional has a great schedule this year, featuring all bracketed Swiss starting at 10:00, three-session knockouts

starting nightly on Monday through Thursday, a four-session knockout on Friday and Saturday, and Gold Rush Pairs Tuesday through Saturday. There are events for pros and novices alike!

Houston is our largest regional and often draws over 3000 tables. It is typically in fifth or sixth in the ACBL Last 6 year's table count:

2012	3111
2013	3260
2014	2791
2015	3103
2016	3057
2017	2922



Mark Bumgardner
New Platinum Life Master

My journey of attaining (Platinum Life Master) started when I was in high school. I played 3 handed bridge with my Father (Bill) and mother (Elsie); they were the spark and inspiration that got me involved with duplicate bridge. They were always encouraging, giving advice when needed and I am very grateful they took the time to mentor me. College was busy so I played infrequently, beginning competitive tournament bridge in the late 80's.

Earning this many masterpoints takes several good partners, teammates and mentors. While there are many who helped me considerably in my quest, I would like to thank the late Hugh Campbell who was a fabulous mentor in my early years. My most frequent partners over the years of Bill Staats and Nagy Kamel. My constant teammates Steve and Nancy Kornegay, Hugh Hillaker and Kimmel Jones. Lastly, I would like to thank the ACBL and club owners for providing us a competitive environment. To my students with all their questions, who are my inspiration to improve and to bring

this great game to a new generation of players who can enjoy it as much as I have



DEADLINES for

January/February 2018 Issue

Announcements: December 1st

Articles, Columns: December 6th

Pictures & Copy must be digital.

E-mail to: scorecard16@gmail.com

SCORECARD

Scorecard (ISSN 10560920) Published bimonthly on the first day of January, March, May, July, September and November by District 16 of the American Contract Bridge League, 10710 Tybalt Trail San Antonio TX 78213 Yearly subscription to members, \$ 3.60, paid with annual dues. Periodical Postage paid at Memphis, TN and at additional mailing offices.

Send copy photos & announcements to:
 Email: scorecard16@gmail.com

All advertising and copy should be submitted to the editor by the **first** and **sixth** days of the month, respectively, preceding publication. Advertising rates available from the editor upon request. Pictures should be in digital format. For replies, include a self-addressed, stamped envelope.

Moving? Missed Issues
Send address changes to:
 ACBL Data Processing Dept.
 6575 Windchase Blvd.
 Horn Lake, MS 38637
 662-253-3130 or
 e-mail addresschange@acbl.org.
 Include ACBL number.

Editors
Executive: Ira & Ellen Hessel
Managing: Ellen Hessel
GNT/NAP Reporter: Ira Hessel
National Reporter: David Sokolow

The Scorecard Committee
 Donna Compton, Chair
 Scott Humphrey
 Annette McCarty

**Platinum Life Master
Marion Gebhardt**



My Journey

Unlike many of my contemporaries, I didn't learn or play bridge in college. I was too busy carrying 20-21 hours per semester in Electrical Engineering. A little over 50 years ago I watched people playing noon bridge at work and decided this was an interesting game. Soon, I was playing at the local club and made life master in 1971. After that, my bridge playing was sparingly for the next 14 years as I coached my daughter's soccer and softball teams.

When I moved back to Dallas in 1985, I played more bridge forming a partnership with Jack Smith. In the 90's my company was acquired by Alcatel, a French company. My job with this company required a lot of travel, so less bridge. When I finally retired in early 2002, I had made Gold Life Master. Forming new partnerships with Roy Baughman and later Gail Wells was instrumental in reaching my goal of 10,000 MPs.

Continued on page 11 **Platinum LM**

Club	Tables	2015	Change 10 years	Change %	Members		Member Change		Table Change	Sessions per player		
					2005	2016	2005	2016		2005	2015	
174	Houston	24286	30103	5817	24.0%	2202	2589	387	18%	24%	44.1	46.5
176	Dallas	10427	15290	4863	46.6%	1231	1591	360	29%	47%	33.9	38.4
183	Fort Western	13309	12937	-372	-2.8%	895	979	84	9%	-3%	59.5	52.9
207	Texas Capitol	6503	10446	3943	60.6%	646	979	333	52%	61%	40.3	42.7
172	San Antonio	9564	7814	-1750	-18.3%	694	649	-45	-6%	-18%	55.1	48.2
225	East Texas	5381	5461	80	1.5%	385	405	20	5%	1%	55.9	53.9
233	Central Texas	2789	2992.5	203.5	7.3%	243	220	-23	-9%	7%	45.9	54.4
201	Sabine Neches	3800	3508	-292.1	-7.7%	228	212	-16	-7%	-8%	66.7	66.2
173	Mexico	5345	4937.5	-407.5	-7.6%	223	198	-25	-11%	-8%	95.9	99.7
187	South Texas	2974	2647	-327	-11.0%	225	180	-45	-20%	-11%	52.9	58.8
197	Lubbock	4203	2372.5	-1830.5	-43.6%	233	158	-75	-32%	-44%	72.2	60.1
209	Greater Permian	3262	2269.8	-992.2	-30.4%	221	157	-64	-29%	-30%	59.0	57.8
204	Fort Concho	3341	2488	-853	-25.5%	169	134	-35	-21%	-26%	79.1	74.3
237	Magic Valley	3448	1862.8	-1585.2	-46.0%	153	104	-49	-32%	-46%	90.1	71.6
224	Fort Phantom	2502	1378.5	-1123.5	-44.9%	156	103	-53	-34%	-45%	64.2	53.5
353	Wichita Falls	2506	1903	-602.5	-24.0%	136	92	-44	-32%	-24%	73.7	82.7
205	Amistad	3098	4117	1019	32.9%	78	81	3	4%	33%	158.9	203.3
	District	106738	112528	5790	5.4%	8118	8831	713	9%	5%	52.6	51.0
	largest 6	64089	76590	12501	19.5%	6053	7192	679	11%	20% ⁴	2.4	42.6
	Others	42649	35937.6	-6711	-15.7%	2065	1639	-426	-21%	-16%	82.6	87.7

Growth of Bridge in Austin

by Sandy Potts

Ed Note. Bridge membership in Austin has increased 52% from 2005 to 2016 as compared to 9% in D16. Club tables are up 61% compare to 5.4 % for D16.

Why is bridge in Austin as successful as it is? What makes it a unique place to play?

Thanks to Rachell Jackson, Laura Delfeld, Beth Tobias, Joyce Cooper, Pat Berry, and Harry Ingham for their assistance in gathering ideas for this article! This was a collaborative effort by all of us.

Demographics: The Austin area has technology companies and colleges/universities with people who are attracted to complex problem-solving recreation. Austin has a computer geek contingency and several higher education institutions. This includes professors, researchers, students and their families.

Education: The Bridge Center of Aus-

tin offers a well-rounded curriculum--from beginner's bridge to more advanced classes. The BCA offers a weekly advanced lecture and limited games begin with a lecture. The Unit supplements with a monthly advanced lecture. The Unit is subsidizing an outside class at the Lifetime Learning Institute.

Care and feeding of all players: Zero-tolerance, partner provided games, food/snacks, etc. It is a team effort to make players have an atmosphere of learning and growing at whatever level each is trying to achieve.

Nurturing newer players: Several limited games and tournaments that are more relaxed than open games. BCA directors who specialize in working with newer players are interested in teaching and modeling bridge knowledge and etiquette. Games that pair newer players with more accomplished players make it possible to form partnerships and friendships often develop.

A key for retention is developing comfort level and the quest for knowledge. Welcoming newer players and watching growth is fun. A mentor-mentee program and a tiered mentoring program help bridge the gap. A nametag program helps one "fit in" and learn names. These magnetic nametags are BCA subsidized. A New Life Master party was held by the Unit to honor all those obtaining this status last year.

Some players work with each other to "help out" and pass the torch to advancing players. Some are known as a safe friend to ask questions and to find out where to look for answers. The "sharks" help players by answering questions. There are several events that combine players with different skill sets. Eight is Enough Team games, The Lone Arranger game, and the One Life Master/One Non-Life Master game allows folks to mix with other players.

Continued on page 8 **Bridge in Austin**

UNITED STATES POSTAL SERVICE® (All Periodicals Publications Except Requester Publications)

1. Publication Title: **Scorecard**

2. Publication Number: **1 0 5 6 - 0 9 2 0**

3. Filing Date: **Sept. 30 2017**

4. Issue Frequency: **Bimonthly**

5. Number of Issues Published Annually: **6**

6. Annual Subscription Price: **\$3.60**

7. Complete Mailing Address of Known Office of Publication (Not printer) (Street, city, county, state, and ZIP+4®):
6527 Windchase Blvd. Horn Lake MS 38637

Contact Person: **Ira Hessel**
Telephone (include area code): **210 316 0127**

8. Complete Mailing Address of Headquarters or General Business Office of Publisher (Not printer):
Same as above

9. Full Names and Complete Mailing Addresses of Publisher, Editor, and Managing Editor (Do not leave blank):
Publisher (Name and complete mailing address): **American Contract Bridge League 6527 Windchase Blvd Horn Lake MS 38637**
Editor (Name and complete mailing address): **Ira Hessel 10710 Tybalt trail San Antonio Tx 78213**
Managing Editor (Name and complete mailing address): **Ellen Hessel 10710 Tybalt trail San Antonio Tx 78213**

10. Owner (Do not leave blank. If the publication is owned by a corporation, give the name and address of the corporation immediately followed by the names and addresses of all stockholders owning or holding 1 percent or more of the total amount of stock. If not owned by a corporation, give the names and addresses of the individual owners. If owned by a partnership or other unincorporated firm, give its name and address as well as those of each individual owner. If the publication is published by a nonprofit organization, give its name and address.)
Full Name: **American Contract Bridge League** Complete Mailing Address: **6527 Windchase Blvd. Horn Lake MS 38637**

11. Known Bondholders, Mortgagees, and Other Security Holders Owning or Holding 1 Percent or More of Total Amount of Bonds, Mortgages, or Other Securities. If none, check box None

12. Tax Status (For completion by nonprofit organizations authorized to mail at nonprofit rates) (Check one)
The purpose, function, and nonprofit status of this organization and the exempt status for federal income tax purposes:
 Has Not Changed During Preceding 12 Months
 Has Changed During Preceding 12 Months (Publisher must submit explanation of change with this statement)

PS Form 3526, July 2014 (Page 1 of 4 (see instructions page 4)) PSN: 7530-01-000-9931 PRIVACY NOTICE: See our privacy policy on www.usps.com



**Shreveport
Top of the Boot Regional
January 8 - 14, 2018**

Entry Fees

\$13.00 per session Mon - Sat
\$120.00 for Sunday Teams
(\$6.00 for each extra team player)
\$4.00 additional per session
for non/unpaid ACBL members

**Expert Speakers daily at 1:30pm
(Tuesday thru Friday)
Neil Cahn
Alan Siebert**

Wyndham Garden Hotel * 1419 East 70th St. * Shreveport, LA
318/797-9900 * 800/462-8040
Bridge Rates: \$92.00 before December 17, 2017

Tournament Co-Chairs:

Pat Craig - 318/286-4130
jpatcraig1942@gmail.com
Claire Covington * 318/426-0000
clairecovington@bellsouth.net

Partnerships:

Earlene Boddie - 318/458-7370
earleneboddie@gmail.com
Jackie Carroll - 828/242-0302
jackiecarroll@bellsouth.net

Fragrance Free Please! * Silence your cell phones



Come get your gold and a taste of Louisiana Hospitality

UNITED STATES POSTAL SERVICE® (All Periodicals Publications Except Requester Publications)

16. Electronic Copy Circulation

	Average No. Copies Each Issue During Preceding 12 Months	No. Copies of Single Issue Published Nearest to Filing Date
a. Paid Electronic Copies:	100	100
b. Total Paid Print Copies (Line 15c) + Paid Electronic Copies (Line 16a)	7928	7866
c. Total Print Distribution (Line 15f) + Paid Electronic Copies (Line 16a)	79138	7876
d. Percent Paid (Both Print & Electronic Copies) (16b divided by 16c x 100)	99	99

I certify that 50% of all my distributed copies (electronic and print) are paid above a nominal price.

17. Publication of Statements of Ownership
 If the publication is a general publication, publication of this statement is required. Will be printed in the **Nov/Dec 2017** issue of this publication. Publication not required.

18. Signature and Title of Editor, Publisher, Business Manager, or Owner: **Ellen Hessel Managing Editor** Date: **9/28/2017**

I certify that all information furnished on this form is true and complete. I understand that anyone who furnishes false or misleading information on this form or who omits material or information requested on the form may be subject to criminal sanctions (including fines and imprisonment) and/or civil sanctions (including civil penalties).



Earn Silver Points as we sail round-trip from Galveston to the Western Caribbean. You will have the opportunity to play bridge twice daily, leaving you time for the ports and sightseeing and to enjoy the many amenities of the Liberty of the Seas.

**Don't Delay!
The first 50 to
sign up will
SAVE \$150!**



Ever sailed on RCCL? Promotions for past guests may apply. Please provide us with your Crown & Anchor number when making your reservation.

For more information or to make your reservation, please call John Sobel at
Go Away Travel
954-349-2800
1-800-721-5927

www.BestBridgeAtSea.com
BestBridgeAtSea@GoAwayTrav.com



2018 Texas Sectional at Sea

Non-Championship Sectional

Royal Caribbean's Liberty of the Seas



Round-Trip Galveston



April 1-8, 2018



Bridge Highlights



Daily stratified games with Silver Points
Open: C=0-500, B=500-1500, A=1500+

Card playing area reserved exclusively for our group

DAY	9:00AM	1:30PM	7:30PM
Sunday	xxxx	xxxx	Meeting
Monday	Game	Game	xxxx
Tuesday	xxxx	Game	Game
Wednesday	Game	xxxx	Game
Thursday	xxxx	Game	Game
Friday	Game	Game	xxxx
Saturday	Game	Game	xxxx

DAY	DATE	PORT	ARRIVE	DEPART
Sunday	April 1	Galveston	xxxx	5:00PM
Monday	April 2	Day at Sea	xxxx	xxxx
Tuesday	April 3	Cozumel	7:00 AM	4:00 PM
Wednesday	April 4	Grand Cayman	10:30 AM	6:00PM
Thursday	April 5	Falmouth	8:00 AM	5:00PM
Friday	April 6	Day at Sea	xxxx	xxxx
Saturday	April 7	Day at Sea	xxxx	xxxx
Sunday	April 8	Galveston	6:30 AM	xxxx

Go Away Travel has purchased the Group Protection Plan on behalf of all travelers!

CAT	CABIN	SIZE	BALCONY	DOUBLE	SINGLE
D2	Balcony	199 sq ft	65 sq ft	\$1,700	\$2,750
I	Outside	159 sq ft	xxxx	\$1,400	\$2,200
M	Inside	150 sq ft	xxxx	\$1,300	\$1,925

Onboard Gratuities are Included!

Prices are per person, cruise only, based on either single or double occupancy and include the following: Government taxes & fees, gratuities and all of our bridge activities. Non-bridge participants may deduct \$150. All categories are subject to availability and all prices and offers are subject to change. Other categories available upon request. A deposit of \$500 is required to reserve a cabin and is fully refundable until the final payment date of December 22, 2017. Cancellations made after this date are subject to penalties. The Plan Documents will be provided to each participant, which details the benefits, exclusions and limitations of the Group Protection Plan. If you do not make you reservation with Go Away Travel, you must register with us prior to the cruise. A \$450 per person non-refundable bridge registration fee will apply.

SAN ANTONIO & NAP WINTER FUN SECTIONAL



Tournament Chair: Kathy Sinkin-Amor
210-846-6707
1Magnoliagirl@gmail.com

Partnership Chair: Debbie Schweiss
210-862-9706
debschweiss@satx.rr.com

Omni Hotel
9821 Colonnade Blvd
800-843-6664
Bridge Rate \$119 (book by 12/16/17)

Results will be posted daily at
www.d16acbl.org/u172



Stratifications:

Flight A 2500+
Flight B 750-2500
Flight C 0-750

All events will be stratified based on average master points EXCEPT for NAPs
All KO events handicapped except teams with 5000+ average

Card Fees:

\$12/person/session
Sunday Swiss/\$120/team (includes lunch)
\$3/session more for non or unpaid members



NAP	
Card Fees: Fri and Sat \$12 per session	
Sun \$15 per session (includes lunch)	
• Flights based on player with most MPs	
• Flight A: Open to any player	
• Flight B: Players with less than 2500 pts. as of June 2017 MP cycle	
• Flight C: Non-life master with no more than 500 MPs as of 6/2017 MP cycle	
<i>Must have qualified at Unit level</i>	

Thursday, January 18, 2018

10:00 am Stratified Pairs
10:00 am 499er Pairs
2:30 pm Stratified Swiss
2:30 pm 499er Pairs

Friday, January 19, 2018

10:00 am Stratified Pairs
10:00 am 499er Pairs
10:00 am Knock Out (Session 1 of 3)
2:30 pm Stratified Pairs
2:30 pm 499er Pairs
2:30 pm Knock Out (Session 2 of 3)
7:00 pm Stratified Pairs
7:00 pm Knock Out (Session 3 of 3)

Saturday, January 20, 2018

10:00 am NAP Qualifying (1st Session)
10:00 am Stratified Pairs
10:00 am 499er Pairs
2:30 pm NAP Qualifying (2nd Session)
2:30 pm Stratified Pairs
2:30 pm 499er Pairs

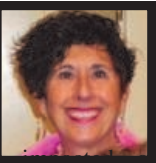
Sunday, January 21, 2018

10:00 & 2:30 2 Session Bracketed Swiss
NAPS Finals

Meal served between sessions

Unit 172 San Antonio

Rebecca Brown
Hurricane Harvey



bridge community in many ways. Many of our bridge friends lost homes, property, peace of mind, whole communities. We all hope that Rockport, site of one of our favorite sectionals, will soon be recovered and ready to receive us at the table. Which, by the way, puts me in mind of the Corpus Christi regional; I hope that many of us showed our support by attending.

At our Luau and Annual Meeting on August 19, Geneva Johnson and Paul Fafoutakis won prizes for best costumes. We had 36 tables in play, including 8 tables of 499'ers. Taking first place in A and B were Mary Lou and Gary Anziani, Yesh Singh and Tony Quiles took first in C and Bob Watson and Kent Tolbert took first among the 499'ers. Congrats to all. Thanks to my co-hosts Ed Rawlinson and Debbie Schweiss.

Despite the gas shortage fears, New Braunfels hosted 235 tables from 9/7-9/10 with another job well done by Paula Warren, chair, and assisted by Jan Wingate, June Reimer (hospitality) and Barbara Morgan (partnership). Ed Rawlinson won a heap of masterpoints (31.62) with Diane Olson (26.07) and Sheryleen Grothus (23.80) doing fabulously, too!

At our NAPs Unit final, almost 24 tables were in play for the two-session day. Karen and George Fillis took first in A and B, with Janina Kuzma and Paul Fafoutakis took first in C. Well done! Those who qualified may advance to the District 16 finals to be held on January 20-21 at the San Antonio Omni.

Milestones: Congrats to new Life Masters Stanley Broadwater and Ann Perry; new Bronze Life Master,

Janice Fletcher, and new Silver Life Masters, Sandra and Victor Press.

Table tidbits: No doubt you have met P.D. Sharma at the table; he's the Precision-playing brother of S.K. But have you had the pleasure of meeting Monica Sharma, P.D.'s wife of 47 years? The lovely couple sat with me and shared some of the details of their interesting lives. Their story started in India and continued all over the globe. They were both at university in Delhi; she was pre-med and he was studying economics. Monica practiced medicine in India for several years but then moved into health care policy and epidemiology, including 25 years at the United Nations. She worked with various U.N. agencies dealing with world health challenges, such as maternal deaths, HIV Aids, etc. Her husband's career took a different path. P.D. completed his Ph.D. in Economics, spending his career in research and teaching, building mathematical models and monitoring sustainable development as Chief Technical Advisor to an international collaboration. He has been a consultant, traveling to Mozambique, South Africa, Venezuela, and Malaysia where he advised governments on economic issues. The couple is bi-coastal (brother here, kids on East and West coasts) and Monica is still traveling a lot with her teaching. Yet, P.D. has brought her to the table. After all, it was her father who taught P.D. to play bridge many years ago in India. She absorbed some of the game at home, but never really played. But now, I think it's safe to say, she's hooked! What a grand addition to our community! Please welcome this wonderful pair!

Upcoming: Mentor/Mentee/Piggy-back open pairs (November 11); Holiday Party (December 9, Fiesta Bridge Club)

SEE YOU AT THE TABLE!

New Braunfels

Sep 07-10 2017
204 players. 235 tables.

1 31.62 Ed Rawlinson
2 26.07 Diane Olson
3 23.80 Sheryleen Grothus
4 23.80 David Ticen
5 23.37 Gary Anziani
6 22.58 Ira Hessel
7 22.58 Ellen Hessel
8 19.45 Virginia Noelke
9 19.45 Venkatrao Koneru
10 18.95 Richard Ware
Thursday Aft Swiss Teams-24 Tables A1. Terry Riely-Carolyn Riely-James La Fountain-Richard Ware A2. Everette Lewis-Wayne Rauschuber-Bill McCarty-Rosemary Kelley B1. Dorthy Rippstein-Anyemarie Weaver-Penny Smith-Jo Ann Robertson B2. Buddy Ellisor-Becky Ellisor-Robert Auvenshine-Kay Dierks C1/2 Elisabeth Kay-Ann Kuehler-Charlotte Schuepbach-Mike Vivian C1/2 Janice Fletcher-Geneva Johnson-Georgia Baron-Stephen Simpson
Thursday AM Open Pairs-22.0 Tables / Based on 26 Tables A1. Ed Rawlinson-Laurie-Ann Levin A2B1. Jerry Barrett-Sharon Dameron B2. Beth Gale-Bob Otis C1. Janice Fletcher-Geneva Johnson C2. Robert Auvenshine-Kay Dierks
Thursday Morn 499er Pairs-4Tables ABC1. Kent Tolbert-Robert Watson ABC2. Jan Wingate-June Reimer
Friday Compact KO 1-1-6 Tables 1. Venkatrao Koneru-Gary Anziani-Virginia Noelke-Ed Rawlinson 2. Elisabeth Kay-Ann Kuehler-Charlotte Schuepbach-Mike Vivia
Friday Aft Open Pairs-22.0 Tables / Based on 27 Tables ABC1. Jarek Langer-Sharon Dameron AB2. Beth Gale-Bob Otis C2. Kay Dierks-Robert Auvenshine
Saturday Aft Open Pairs-26.0 Tables A1. Ira Hessel-Ellen Hessel A2B1. Jerry Barrett-Gary Anderson B2. Brett Elliott-Harry Elliott C1. Carol Ramberg-Gerald Irion C2. Frank Schwakhofer-Annetta Hughson
Saturday Aft 499er Pairs-6.5 Table ABC1. Jon Pack-Anni Pack ABC2. Joanne Davis-Hazel Medellin

Saturday AM Open Pairs-27.5 Tables / Based on 35 Tables A1. Marilyn Arnold-Richard Ware A2 BC1. Rena Lunke-Carol Ellis B2. John Moore-Roxann Swenson C2. Carol Ramberg-Gerald Irion
Saturday AM 499er Pairs-7.0 Tables AB1. Ralph Brettschneider-Cynthia Brettschneider AB2C1. Suzanne Miller-Charlene Johnson C2. Jon Pack-Anni Pack
Friday AM Open Pairs-19.5 Tables / Based on 27 Tables AB1. Kay Laird-Richard Curtin A2. Everette Lewis-Diane Olson B2. Robert Martin-Barbara Morgan C1. Robert Immel-Donald Messer Jr C2. Joan Schnider-Sandra Press
Friday AM 499er Pairs-7Tables A1. Geneva Johnson-Mary Kathryn Twite A2BC1. Kent Tolbert-Robert Watson
Saturday Aft 499er Pairs-5.0 Tables ABC1. Phillip Corrigan-June Reimer ABC2. Lois Kertesz-Rose Brooks
Neil Morgan Sun Swiss-1-7 Tables 1. Thomas Trudeau-Diane Olson-Sheryleen Grothus-David Ticen 2. Virginia Noelke-Venkatrao Koneru-Gary Anziani-Ed Rawlinson
Neil Morgan Sun Swiss-2-7 Tables 1. George Fillis-Karen Fillis-Beverly Santos-C David Mitchell 2. Lysa Nguyen-Yaoguang Zhu-Charlene Sands-Virgil Massey
Neil Morgan Sun Swiss-3-7 Tables 1. Daniel Baker-Anita Albert-Joyce Cooper-Terri O'Brien 2. Sandy Potts-Stan Pushkarsky-John Moore-Roxann Swenson
Neil Morgan Sun Swiss-4-7 Tables 1. Stephanie Stevens-Homer Stevens-Bob Otis-Beth Gale 2. Susan Ohm-Eleanor Siegal-K Voges-Moshe Draznin

Wichita Falls Sectional

Sep 22-24 2017
66 players 76 tables.

1 11.52 Nancy Purcell
2 11.52 H Wendell Williams
3 11.52 Carolyn Bryan
4 9.33 Bernie Lange
5 9.25 Rose Van Meter

6 8.35 John Schwartz
7 8.35 James Thurtell
8 7.34 David Hertzog
9 7.29 Kathleen Brown
10 7.14 Gladys Barley
Friday AM Open Pairs-9.5 Tables A1. James Thurtell-John Schwartz A2B1. Bernie Lange-Nancy Purcell B2. Gladys Barley-Gertrude Downey C1. Martin Blecha-Gina Inman C2. Margaret Downey-Nancy Ramsey
Friday AFT Open Pairs-8.0 Tables A1. Gary Straka-Jack Killough A2. Carolyn Bryan-H Wendell Williams B1. Rose Van Meter-Patty Hofer B2. Bernie Lange-Nancy Purcell
Friday AFT 299er Pairs-2.5 Tables 1. Saranell Farr-Jolene Huddleston 2/3 June Kiley-Robert Kiley 2/3 Betsy Smith-Rosemary Barrington
Saturday AM Open Pairs-10 Tables A1/2 Carolyn Bryan-H Wendell Williams A1/2 B1. Margaret Downey-Nancy Ramsey B2. Amy Conley-Bernie Lange
Saturday AM 299er Pairs-3.0 Tables AB1. Rosemary Barrington-Betsy Smith A2. Delores Maddox-Tomme Meadows B2. Robert & June Kiley
Fri/Sat Bracketed KO T-1-5 Tables 1. Marsha May-Martha Keller-Wanda Hughes-Dee McKinley 2. Carrol Green & Green-Carole Tucker-Ruth Streit
Saturday AFT 299er Pairs-4.0 Tables AB1. Martin Blecha-Gina Inman AB2. June Kiley-Robert Kiley
Saturday AFT Open Pairs-8.5 Tables AB1. Rose Van Meter-Nancy Purcell A2. Carolyn Bryan-H Wendell Williams B2. Robert Phillips-David Hertzog
Sunday Swiss Teams-10 Tables A1. David Hertzog-Kathleen Brown-Betsy Parks-Whittie Rainwater A2B1. Sonja Holley-Shirley Rowe-Roland McWhorter-Jo Wamsley B2. Mary Knox-Ray Duncan Lawton OK; Martin Blecha-Gina Inman

NEW BRAUNFELS WINNERS



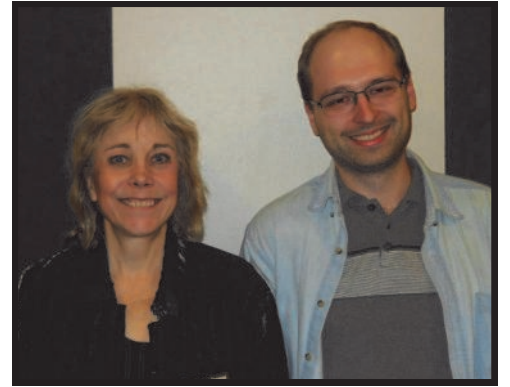
Ed Rawlinson, Laurie Levin
Thursday Morning Pairs A



Jimmy La Fountain, Richard Ware,
Carolyn & Terry Riely
Thursday Swiss A



Kay Laird, Rich Curtin
Friday Morning Pairs A&B



Sharon Dameron, Jarek Langer
Friday Afternoon Pairs A,B&C



Babu Koneru, Ed Rawlinson,
Gary Anziani, Ginny Noelke
Friday Compact KO



Marilyn Arnold, Richard Ware
Saturday Morning Pairs A



Ellen & Ira Hessel
Saturday Afternoon Pairs A



Tom Trudeau, Diane Olson,
Dave Ticen, Sheryleen Grothus
Sunday Swiss Bracket 1



Jerry Barrett, Sharon Dameron
Thursday Morning Pairs B



Janice Fletcher, Geneva Johnson
Thursday Morning Pairs C



Jo Ann Robertson, Anyemarie Weaver,
Dorothy Rippstein, Penny Smith
Thursday Swiss B



Georgia Baron, Janice Fletcher,
Geneva Johnson, Steve Simpson
Thursday Swiss C Tie



Kent Tolbert, Bob Watson
Thursday Morning 499ers



Charlotte Schuepbach, Ann Kuehler,
Mike Vivian, Elisabeth Kay
Thursday Swiss C Tie



Carol Ellis, Rena Lunke
Saturday Morning Pairs B&C



Gary Anderson, Jerry Barrett
Saturday Afternoon Pairs B



Gerald Irion, Carol Ramberg
Saturday Afternoon Pairs C



George Fillis, David Mitchell,
Karen Fillis, Beverly Santos
Sunday Swiss Bracket 2



Joyce Cooper, Terri O'Brien,
Daniel Baker, Anita Albert
Sunday Swiss Bracket 3



Stephanie Stevens, Beth Gale,
Steve Stevens, Bob Otis
Sunday Swiss Bracket 4



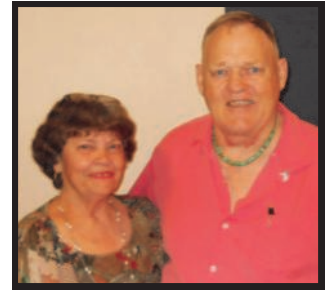
Geneva Johnson, Mary Kay Twite
Friday Morning 499ers



George Corrigan, June Reimer
Friday Afternoon 499ers



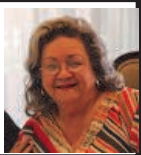
Cynthia & Ralph Brettschneider
Saturday Morning 499ers



Anni & Jon Pack
Saturday Afternoon 499ers

Unit 174 Houston

Carol Ann Wilson



Unit News: As nearly everybody in the world knows, Hurricane Harvey did a number on the Houston area, and many, many of our bridge players—and bridge clubs—were not spared. Our President, **Bill Riley** and his wife **Nancy** were among the many in Kingwood who were devastated, and he had to resign his position to deal with those problems, but thankfully he is able to remain on the Board. **Nancy Strohm** has been elected for fill the remaining term as President of Unit 174. Our unit has strengthened from her strong leadership in the past, and we appreciate her agreeing to serve again. This is in addition to her work as one of the five ACBL Charity Foundation trustees and her many other duties—not the least of which are the many tournaments she and **Hans**

attend around the country. VP **Ken Hudson** filled in until her election, and he remains as VP. We have many clubs in our Unit 174, and our hard-working board members visit *all* of them through the successful Club Connection Program. Without question, we are very proud of **Paul Cuneo**, who now represents District 16 on the ACBL Board of Directors. We remind all that we are **Houston Strong!**

We are hard at work preparing for our **Lone Star Regional** January 29-February 4 of 2018, at the newly renovated Marriott Houston Westchase, 2900 Briar Park Drive, Houston TX 77042 (reservations 713-978-7400 or 888-236-2427) with a \$119 rate. Cutoff date is January 19. We hope to set a new record, and if you have wondered what you can do to help, just **Come One and All!** We will have plenty of hospitality waiting for you, as well as a great, new schedule! The Sunday games will even get you out in time for the Super Bowl! Get the flyer from our Website, www.acblunit174.org.

More from Toronto: **Eddie Wold's** team landed 2nd in the Roth Open Swiss Teams at the Summer NABC in Toronto; **Joe Quinn** and **Shawn Quinn** were 7th in the Freeman Mixed Board-A-Match Teams; and **Ira Garrison** and **Philip Duterme's** team was in an 8-way tie for 9th in the 0-6000 Mini Spingold Teams.

Success Stories from Unit 174: **Clear Lake BC** 299ers hosted a 94th birthday party for one of their favorites, **Otilia Magee**. We heard about birthday cake, flowers and lots of mimosas! **Spring Branch Duplicate Club** celebrated its 25th Anniversary with a big party on 10/5, which had been rescheduled because of Hurricane Harvey. **Lake Conroe Duplicate Club** held a successful Club Championship Swiss Teams game on 9/29

Westside Bridge Academy, Bridge Club of Houston, and Clear Lake Bridge Club are continuing to have much success with classes and courses, and information may be found at their Websites, which are linked to our Unit 174 site, so well

maintained by Webmaster **Carol Winograd**. Classes are such a good way to increase table count for regular games and to get more players started, because as we learn more, we want to play more!

New 70% Milestones: At **Bridge Club of Houston**, **Brian Shaffer** and **Jim Nicas** had a 73.47% game on 8/22; **Vijay Khandekar** and **Sadashiv Pethe** posted 71.88% on 9/22; and **Zane Bolen** and **Shok Chhabra** had a 70% game on 9/26. At **Westside Bridge Academy** on 8/24, **Joe Quinn** and **Shawn Quinn** had a 73.05% game, and **Dolores Aquino** and **Renata Frutiger** had a 73.00% on 9/27 in the Open Game; **Linda McCasland** and **Charlotte Howell** posted a 70.08% game in the I/N game on 9/27. At **Clear Lake BC Jo Ann Pierce** and **Tomi Porterfield** posted a 71.12% on 9/13, and **Ida Morrow** and **George Wieland** had a 72.12% on 9/18, both in the Open Game. In the 0-200 game, on 8/14 **Joy Cowan** and **George (Mike) Cowan** had a 73.14% and on 9/27, **Scott Koehler** and **George Rosen** had a 70.46%. **Congratulations to all for these rare**

achievements!

Practical Tips and Pointers to Ponder: Learning how to properly value your hand is a smart thing to bone up on. How many times have you had 10 -x-x-x in a suit overcalled by your RHO and 10 balanced HCP with a doubleton in the suit your partner opened and failed to bid 1NT because you didn't think you had opponent's suit stopped? It happens way more than it should. Well, in the October *Bulletin* on page 51, **Mike Lawrence** discusses this very example. Check it out. And aren't we hearing about a lot of 11-point openers in first seat these days? The key is, it's not just a matter of having 11 HCP; it's the *quality* of those 11 HCP. Again in the wonderful October issue of the *Bulletin*, **August Boehm** discusses this on page 54. Proper hand evaluation is an acquired and studied art, and it's the winners who possess that knowledge. Do your homework on **hand evaluation** and see if your scores don't improve. There are 10-point openers as well as 12-pointers that should never be opened. And I just want to mention this: Do you know how much

there is about Bridge on YouTube? Search "contract bridge" and you will be amazed.

Remembering Those Who Have Passed On: **Karla Riddick** passed away on 8/24; **Willy Bailey** passed on 9/13; **Jack Balter** died on 9/27 after playing twice the day before; and **Mary McManus** died 10/1 after a month-long hospitalization. They were all regular players and club supporters, and we will miss them.

Till next time . . .



The holidays are soon approaching, and I know you Unit 176 members will be busy with family and friends. Since our last article, Unit 176 held its yearly regional tournament at the Renaissance Hotel. Thanks to our dedicated volunteers and board members, it was a huge success. Remember, we could not take on this feat without these kind and generous workers. A very special thank you to Robbie Ogle who chaired the reception for the 0-499ers. Carolyn New was her right-hand man and many contributed baked goods. It was not only delicious, but elegant as well. Also, we owe a big thanks to Lyn and Mike Davis for chairing the partnership desk. The new schedule at the regional was very popular. However, we missed many of our Houston buddies because of the hurricane floods. Our heartfelt condolences go out to all those involved in this natural disaster and hope they are progressing and improving well. Even with this, our table count was up from last year.

Congratulations to those who qualified for the NAP's and hope they will continue on to compete at the district

level. Unit 176 will be hosting a sectional October 26-29. With the new schedule, there are only morning and afternoon games. There will also be a social on Saturday evening after the afternoon game.

Don't forget our holiday party on December 10th at 1:30 at Richardson Civic Center. It's always such a festive event with good food and an opportunity to contribute to local charities. Remember to bring an unwrapped toy and canned goods for the food drive. Those who are less fortunate will thank you.

Bridge at Gooch Elementary in DISD is continuing this year. After the trial program last spring, we have been approved for this school year. Sheri Wolkenstein and Ann Parker are our teachers who have done such a great job. I'm certain they need volunteers so contact them if you would like to help. Be sure to contact me about news to include in the article. Happy Holidays and hope to see you at the table.

Dallas Labor Day Regional

Richardson,
Aug 29-Sep 04, 2017
925 players 1572 tables.

1 100.36 Bill Staats, Southlake
2 96.53 Mark Bumgardner, Dallas
3 86.41 Melanie Tucker, New York
4 86.41 John Kranyak, Las Vegas
5 86.41 Brad Moss, Denver CO
6 86.41 Aaron Silverstein, New York
7 80.25 Stephen Komegay, N Richland Hls
8 80.25 Nancy Komegay, N Richland Hls
9 80.25 Colby Vernay, Lacon IL
10 80.25 Barry Schaffer, Frisco
11 80.14 Nagy Kamel, Plano
12 80.14 Dan Morse, Houston
13 73.54 Hemant Lall, Dallas
14 63.82 Kimmel Jones, Euless
15 63.82 Hugh Hillaker, Grand Prairie
16 62.26 Jeff Dater, Dallas
17 60.83 Nancy Passell, Plano
18 58.54 Michael Penick, Dallas

19 56.28 Steve Shirey, Fort Worth
20 56.28 Robert Adams, Ok.City OK
21 54.53 Marion Gebhardt, Richardson
22 54.16 Sharon Dameron, Cedar Park
23 53.18 James Bauer, Dallas
24 53.07 Mary Udell, Albuquerque
25 53.07 Joe Harris, Albuquerque

Tuesday Open Pairs -11.0 Tables

A1 Jay Gibson -Martha Young, Dallas A2. Nancy Stanton, Lewisville; Beth Coker, Bryan A3. John Schwartz, Plano; James Thurtell, Dallas A4. Nancy Passell, Plano; Grace Hunt, Prosper A5B1. Mary McGinnis -Jim Harp, Dallas B2C1. John Moore -Stan Pushkarsky, Austin B3C2. Mary Lynn Trentham, Richardson; Marjorie Deutsch, Fort Worth B4 C3. Mike Vivian -Charlotte Schuepbach, San Antonio

Tuesday Swiss Bracket-1 -9 Tables

1. Barry Schaffer, Frisco; Nancy Kornegay -Stephen Kornegay, N Richland Hls; Colby Vernay, Lacon IL 2. Dan Morse, Houston; John Sutherlin -Mark Bumgardner, Dallas; Nagy Kamel, Plano 3. Hemant Lall -Petra Hamman -Peggy Sutherlin, Dallas; Emily Harrell, Shoal Creek AL 4. Joan Jackson -Norman Beck, Dallas; Tom Edwards, Grand Prairie; Bryan Storey, Frisco

Tuesday Swiss Bracket-2 -9 Tables

1. Anita Albert -Jerry Barrett -Gary Anderson, Austin; Sharon Dameron, Cedar Park 2. Frank Durante, Addison; Nancy Latner, Dallas; Ari Sippola, Irving; Robert Schmidt, Murphy 3. Rosalee Hacker, Southlake; Sharon Tomnitz -Preston Morrow, Dallas; Randy Earle, McKinney 4. Robert Holliday -Liane Tsai, Plano; Ann Parker -Sheri Wolkenstein, Dallas

Tuesday Swiss Bracket-3 -14 Tables

1. Connie Van Patter -Karen Roland, McKinney; Rosalind Smith, Dallas; Jerry Frankel, Plano 2. Wayne Williams -Stan Carr -William Eads, Fort Worth; Michael Blanchard, Benbrook 3. Shreedhara Ramarathnam, Tyler; Robert Dixon, Arlington; Israel Bar-Nir, Flower Mound; Fred Seipp, Dallas

Wednesday Gold Rush Pairs -22.0 Tables AB1. Ramon Nelson II, Plano; Jack Hartel, McKinney AB2. Harold Schulz -Carlene Stewart, Granbury A3. Judy Taylor Mathews, Moody; G Nell Carpenter, Woodway A4B3. Gwendolyn Faherty -Carmond Fitzgerald, Granbury A5. Laura Lowe -George Lowe, Arlington B4. Heather Williams -Anna Gail Chapman, Amarillo

Wednesday Choice Pairs -22.0 Tables / Based on 59 Tables

AB1. Jeff Dater, Dallas; Tomi Storey, Frisco AB2. Charles Brown, Arlington; Larry White, Grapevine A3.. Mary Udell -Joe Harris, Albuquerque NM A4. Ron La Cour -Anne La Cour, Georgetown A5. Florence Beaird -Marcia Hutchison, Dallas A3B1. Tom Wahl, Little Rock AR; AJ James, Spring A4B2. J Terrence Wolfe -William Driscoll, Richardson A5. George Burcham -Sidney Perutz, Dallas B3. Carol Black, Grapevine; Cynthia Bohnenblust, Euless B4. J Pat Craig -Susan Young, Shreveport LA

Wednesday Swiss Bracket-1 -9 Tables

1. Kimmel Jones, Euless; Hugh Hillaker, Grand Prairie; Bill Staats, Southlake; Mark Bumgardner, Dallas 2. Robert Adams, Oklahoma City OK; Steve Shirey, Fort Worth; Marion Gebhardt, Richardson; Roy Baughman, Pantego

Wednesday Swiss Bracket-2 -9 Tables

1. Tom Whitesides -Randy Ekman -Mark Till, Dallas; Susan S Doe, Irving 2. Margot Hirsch, Arlington; Theresa Ann Brantley, Mansfield; Sheila Harrison, Houston; James McCommons, Dallas

Wednesday Swiss Bracket-3 -9 Tables

1. Gayle Orvis -Robert Orvis, Burleson; Ken MacMorran -Sharon MacMorran, Austin
2. John Pelletti -Diana Winkelmann -Jane Kirby, Dallas; Ribs LaMothe, Coppell

Wednesday Swiss Bracket-4 -9 Tables

1. James Rider -Cheryl Rider -Jo England, Dallas; Patricia Marchman, Garland 2. Liane Tsai -Tommie Anglemeyer, Plano; Sandra Fedro,

Richardson; Marie-Anne Johnson, Dallas

Wednesday Swiss Bracket-5 -9 Tables

1/2 Israel Bar-Nir, Flower Mound; Shirley Morrison, Edmond OK; Liana Vernon, Hot Springs Vlg AR; Leigh Primerano, Helotes 1 1/2 Reg Watt -Susan Colby, Garland; Abu Qureshi, Richardson; Nget Carter, Plano

Wednesday Swiss Bracket-6 -14 Tables

1. Robert Babb -Michael Edwards -Sherlene Edwards -Laurie Hartline-Babb, Georgetown 2. Martha Ward -Sharon Ward, Plano; Karen Roland -Connie Van Patter, McKinney 3. Joyce Anderson, Fort Worth; Mary Ellen Little, Trophy Club; Carol Segreti, Arlington; Grace Daddario, Cedar Hill

Thursday Gold Rush Pairs -25.0 Tables

B1. Martha Ward -Sharon Ward, Plano B2. Pat Ward -Trigg Yerby, Ada OK B3. Jerry Frankel, Plano; J Reagan Dixon, Dallas B4. Laura Lowe -George Lowe, Arlington B5. Mickey Goldwater -Julianne McKenna, Austin CD1. Judy Zipkes, Addison; Rebekah Hahn, The Colony C2. Neill Ray -Franci Moses, Dallas C3 Dwight Stafford -Samuel Smith, Oklahoma City OK C4D2. Sarah Hillyer -Betty McMahan, Tyler C5. Liz Taylor-Lane -V (Ginny) Hargrove, Lubbock

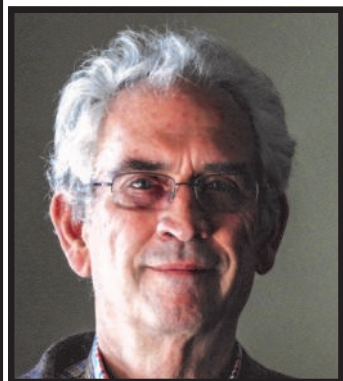
Thursday Choice Pairs -23.0 Tables / Based on 61 Tables

A1. Joe Harris -Mary Udell, Albuquerque NM A2. Brady Allen -James Bauer, Dallas A3. Phil Clayton, Frisco; Marcus Poe Jr, Prosper A4. Gerrie Owen, Celina; Preston Morrow, Dallas A5. Alan Hierseman, Olathe KS; David Braverman, Overland Park KS B1. Jimmy Justice -Paula Justice, Waxahachie B2. John Bridgewater II, Columbus IN; Rajasekhar Menon, Southlake B3. Tom Whitesides -Marian Maley, Dallas B4. David Ticen, Victoria; Kim Brinkman, Highland Vlg B5. Laura Delfeld, Austin; Terri O'Brien, Leander C1. David Greims, Dallas; Moises Ganc Kolodner, Mexico Mexico C2. Robert Burton -Dolline Burton, Georgetown

DALLAS UNIT 176 NOMINATES SIX CANDIDATES

The Dallas Bridge Association, ACBL Unit 176, announces it's slate of candidates for the upcoming election of Unit Board Members.

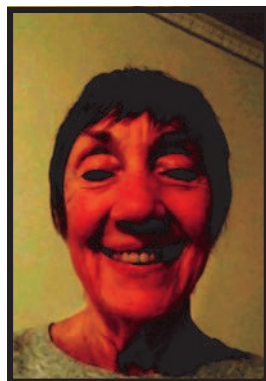
The election will be held at the Dallas Winter Election Sectional January 4-7, 2017 The voting booth will be open 30 minutes before each session. (Political announcement by Dallas Unit 176)



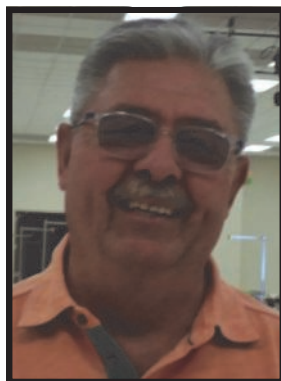
Truett Cates



Scott Nason



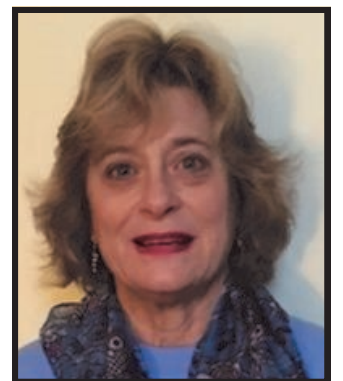
Eileen Smith-Davidoff



Jim Rider



Janet McCormack



Martha Young

Truett Cates

I have been at Austin College in Sherman since the fall of 1979. I enjoy the daily contact with my students and colleagues; the college has supported my career in German Studies and Linguistics at every point. Like many of my generation I started playing bridge as an undergraduate, but found it difficult to continue in the decades that followed. Work and family took priority. Then at a certain point I went ahead and started playing at the local duplicate club in Sherman. And I started teaching "Bridge for Scholars" in Austin College's January Term. Since 1998 I have exposed about 200 undergraduates to our lovely game. A handful continue to play in tournaments, and a few more online. My hope is that some will also return to the game when they can get their priorities straight.

If I am elected to the board I will pursue ways to reach out to younger players; I would especially love to set up intercollegiate competition in North Texas. The membership in our district could be a core of support for initiatives that would expand and diversify our reach.

Scott Nason

I was introduced to bridge in high school by my father and took up the game more seriously in college, amassing all of 150 MPs. I mostly gave up the game for 35 years to get married to my wife, Meryl, raise two kids, and have a 29 year career as an executive at American Airlines. I retired from AA in 2009.

In 2011 I returned to the bridge circuit, and made and Ruby Life Master earlier this year. I attended many of the Nationals in the last few years placing in last year's Mini-Blue Ribbon and the Mini-Spingsolds in Toronto this year. I plan to complete the Director's training class in Houston in January and the Bridge Instructor's class next year. I would love to represent the unit on the Board, helping to make the local bridge scene even better and more attractive to more players.

Eileen Smith-Davidoff

I have been a high school English teacher, an IBM office products trainer, a marketing manager and an HR manager. Now it is time for my real passion - our wonderful game of bridge. I have worked diligently over the last

few years becoming an integral part of many of our local programs. I serve on our tournament committee, lead our publicity effort, am the licensed facilitator for our Learn Bridge in a Day program and assist with the school bridge program. When asked to help I have said YES. For these efforts I was recognized with the Unit 176 Texas Star award.

I would love to serve on our unit board to help do whatever I can to make our unit and this game as good as it can be. I ask for your vote and promise to continue to support bridge growth in our community

Jim Rider

I was a pilot for American Airlines for 31 years and retired in 2004. Originally, I graduated from Kent State University with a degree in history and joined the Air Force where I was a pilot for 5 years, serving in the Vietnam War.

After a 40-year hiatus from bridge, I began playing again at the end of 2014. In addition to bridge I enjoy traveling and playing golf with my wife, Cheryl. I have two children and three grandchildren who keep me busy.

Janet McCormack

I've worn many hats in my life. Wife and mother, model, actress, salesperson, make-up instructor, advertising and public relations.

All of this interfered with my bridge game. I kept coming back to a game I witnessed for the first time at the 1950 Fall Nationals in New Orleans. It was love at first sight. What could be better than going to a club and playing bridge with players who are better than you are. I feel the same today.

It's important that every player who buys an entry enjoy the challenge and camaraderie of our game. I have been invited to run for the Dallas Board. It is an honor I treasure and if elected I will strive to bring new players to this game we all love.

I ask for your support. Thank you.

Martha Young

I am running for re-election to the board. The past 2 years I have served as President. I am pleased to recount the many accomplishments of the board during the past few years.

Implemented a Learn Bridge in a Day program
Began teaching bridge in a North Dallas elementary school
Implemented a novice program punch card program
Made the Holiday Party free
Balanced the budget
Modified our tournament schedule

Recently the unit also successfully transitioned to a new Business Manager, Ed Yetter and a new Equipment Manager, Valarie Remmers. I am pleased to work with such a great group of volunteers. This opportunity has challenged me to learn more about ACBL, meet and work with a wide variety of people and most importantly make new friends while furthering our local bridge opportunities.

My career was spent in IT In 2015, I retired from executive management...whew!

C3. Jane Ardoin, Eunice LA; Dee Daigle, Lafayette LA C4. Mary Lynn Trentham, Richardson ; Marjorie Deutsch, Fort Worth

Thursday Swiss Bracket-1 -9 Tables
1. Nancy Kornegay -Stephen Kornegay, N Richland Hls ; Barry Schaffer, Frisco ; Colby Vernay, Lacon IL 2. Hemant Lall -Michael Penick, Dallas ; Bill Staats, Southlake ; Nancy Passell, Plano

Thursday Swiss Bracket-2 -9 Tables
1. Milton Neher, Richardson ; Scott Nason -Jeff Dater, Dallas ; Tomi Storey, Frisco 2. Margot Hirsch, Arlington ; Theresa Ann Brantley, Mansfield ; Sheila Harrison, Houston ; James McCommons, Dallas

Thursday Swiss Bracket-3 -9 Tables
1. Thomas Smith -Stan Pushkarsky - James Moody -John Moore, Austin 2. Vernon Earl Hodge -Marsha Young -Carolyn Motes Jr -Carol Adamek, Dallas

Thursday Swiss Bracket-4 -9 Tables
1. N Tripode, Frisco ; Marvin Migdol -Nicolas Weisz, Dallas ; Ribs LaMothe, Coppell
2. Sam Shah -Jo Shah, Irving ; Nancy Arthur -Michael Arthur, Pearl River LA

Thursday Swiss Bracket-5 -9 Tables
1. Milton Birmingham -Annie Mason -John Mason, Fort Worth ; Donald Pigg, Burleson
2. Charlie Kemp -Marjorie Kemp, Longview ; Pat Cawley -Janet Bullock, Tyler

Thursday Swiss Bracket-6 -14 Tables
1. John Milligan, Frisco ; Jeff Watkins -Betty Woodward -Dan Woodward, Fairview 2. Carla Joiner, Dallas ; Floyd Gerwig, Plano ; Mary Lynn Genovesi, Fairview ; Karen Cohen, Irving 3. Lenette Sadler, Carrollton ; Monetta Owen, Murphy ; Linda Jimmerson, Dallas ; Nancy Kelly, Addison

Friday Gold Rush Pairs -14.0 Tables BC1. Jianbo Chen, Frisco ; Eddie Chen, Allen B2. Michael Renbarger -Lynnette Renbarger, Superior CO B3C2. Sandra O Bannon -Cheryl Landers, Tyler B4/5 John Lawrence -Betty Lawrence, Shreveport LA B4/5C3. Barbara Wood -Mary Williams, Rockwall C4. Rosemary Lootens -Rick Degrauwe, Dallas C5D1.

Friday Open Choice Pairs -21.5 Tables / Based on 59 Tables AB1. Jeanine Wofford, Frisco ; David Nurenberg, Dallas A2. Thomas Corlett -Ethel Corlett, Waco A3. John Spessard, Dallas ; Bill Osborn, Frisco A4. Claudette Hartman -Tobi Sokolow, Austin A5B2. Tom Whitesides -Judy Jacoby, Dallas B3. Laura Delfeld, Austin ; Terri O'Brien, Leander B4. Harry Elliott, Cypress ; G Thomas Rush, Houston B5. Lynne Wood, Richardson ; Peter Grenier, Dallas C2. David Greims, Dallas ; Fred Curtis Jr, Garland C3. Betty McCauley, Oklahoma City OK ; Dorothy Moore, Keller

Friday Swiss Bracket-1 -9 Tables
1. Brad Moss, Denver CO ; Melanie Tucker -Aaron Silverstein, New York NY ; John Kranyak, Las Vegas NV 2. Marion Gebhardt, Richardson ; David Pearlman, Southlake ; Steve Shirey, Fort Worth ; Robert Adams, Oklahoma City OK

Friday Swiss Bracket-2 -9 Tables
1. Jeff Dater -Scott Nason -Florence Beaird, Dallas ; Milton Neher, Richardson 2. Joseph Gill, Richardson ; Bob McNeill, Frisco ; Adrienne Feuer, McKinney ; Jon Browne, Plano

Friday Swiss Bracket-3 -9 Tables
1. Jim Harp -J Reagan Dixon, Dallas ; Karen Roland -Connie Van Patter, McKinney
2. Rich Brandenburg, Coppell ; Tony Pellegrini, Plano ; Wayne Evans -William Driscoll, Richardson

Friday Swiss Bracket-4 -9 Tables
1. Robert Holliday -Liane Tsai, Plano ; Ann Parker -Marie-Anne Johnson, Dallas 2. Rachell Jackson -Nell Sanders -James Moody -Thomas Smith, Austin

Friday Swiss Bracket-5 -9 Tables
1. Judy Nixon -Jim Nixon -Jeanette McDonald, Flower Mound ; James Cothran, Savannah
2. Jennifer Rao, Dallas ; Mary Lynn Genovesi, Fairview ; Karen Cohen, Irving ; Floyd Gerwig, Plano

Friday Swiss Bracket-6 -9 Tables
1. Dwight Hill, Grand Prairie ; John Robbins -Joyce Anderson, Fort Worth ; Mary Ellen Little, Trophy Club 2. Lynell Pinion -Barbara Horowitz -Dee Bridgewater, Frisco ; Elizabeth Donner, The Colony

Friday Swiss Bracket-7 -11 Tables
1. Phyllis Baltz -Rusty Baltz, Hot Springs AR ; Carolyn Stowers -Anna Hayden, Little Rock AR 2. Fred Seipp -Melanie Munnell -Cordelia

Cottingim, Dallas ; Robert Frisch, Carrollton

Sat Gold Rush Pairs -18.0 Tables
BC1. Robert Deboom, Allen ; James Porter, McKinney BC2. Heather Williams -Anna Gail Chapman, Amarillo BC3. Kenneth Javor -Constance Javor, Denton BC4. Robert Dixon -John Biel, Arlington B5. Jane Ardoin, Eunice LA; Dee Daigle, Lafayette LA C5. Judy Duval, Richardson ; Susan Colby, Garland

Saturday Choice Pairs -21.0 Tables / Based on 57 Tables A1. B Marshall -Ned Hager, Tulsa OK A2. Joan Jackson -Peggy Sutherlin, Dallas A3. Nancy Stanton, Lewisville ; Lynne Wood, Richardson A4B1. Sandy Potts -Stan Pushkarsky, Austin 5. Virgil Massey, Driftwood ; Charlene Sands, Pflugerville B2. Kashi Singh, Euless ; Chen Wang, Lewisville B3. Thomas Schmidt -Leigh Anne Schmidt, Plano B4. B J Sanders -Mark Sanders, Austin B5. Nancy Harralson -Lue Waddle, Dallas C1. Shawn Drenning -Jarek Langer, Austin C2. Lindsey Jones, Oak Point ; Liz Castioni, Frisco

Saturday Swiss Bracket-1 -9 Tables
1. Bill Staats, Southlake ; Michael Penick, Dallas ; Kimmel Jones, Euless ; Hugh Hillaker, Grand Prairie 2. James Bauer -James Thurtell, Dallas ; John Schwartz, Plano ; Stephen Castellino, Castro Valley CA

Saturday Swiss Bracket-2 -9 Tables
1. Bryan Storey, Frisco ; Tom Edwards, Grand Prairie ; John Bromberg -Beth Bromberg, Dallas 2. Alfred Fortier III, Katy ; Anton (Tony) Haddad -Sheila Harrison, Houston ; Marilyn Adams, Beaumont

Saturday Swiss Bracket-3 -9 Tables
1. Stephen Birnbaum -Bob Butterfield -James McCommons -Eileen Smith, Dallas
2. Pawel Hanus, Carrollton ; Bob Wilkin, Highland Vlg ; Ari Sippola, Irving ; Robert Schmidt, Murphy

Saturday Swiss Bracket-4 -9 Tables
1. Edward Yetter -Bonnie Kay Yetter, Garland ; John Moore -Roxann Swenson, Austin 2/3 Gary Wright -Audrey Wright -Jane Larimore -Patricia Sears, Fort Worth 2/3 Jim Harp, Dallas ; Kevin Broderick, Midlothian ; Connie Van Patter -Karen Roland, McKinney

Saturday Swiss Bracket-5 -9 Tables
1. James Rider -Cheryl Rider, Dallas ; Tom Lang, Richardson ; Bonnie Shea, Allen 2. Robert Holliday -Liane Tsai, Plano ; Ann Parker, Dallas ; Gool Castleberry, Irving

Saturday Swiss Bracket-6 -9 Tables
1. Bruce Harbour -Fonse Ragland -Sam Norvell -David Noteware, Dallas 106.00
2. Judy Nixon -Jim Nixon -Jeanette McDonald, Flower Mound ; James Cothran, Savannah

Saturday Swiss Bracket-7 -9 Tables
1. Jerry Frankel, Plano ; Rosalind Smith, Dallas ; Karen Cohen, Irving ; Mary Lynn Genovesi, Fairview 2. Wayne Williams -Bill Sanders, Fort Worth ; Opie White, Aledo ; Michael Blanchard, Benbrook

Saturday Swiss Bracket-8 -8 Tables
1. Jin Chu, Plano ; Pingshan Wen, Allen ; Vivian Li -Jun Li, Richardson 2. Robert Babb -Laurie Hartline-Babb -Sherlene Edwards -Michael Edwards, Georgetown

Sunday Gold Rush Pairs -12.0 Tables B1. Jane Ardoin, Eunice LA; Dee Daigle, Lafayette LA B2C1. Heather Williams -Anna Gail Chapman, Amarillo B3. Jackie Long -Janet Meyer, Dallas B4. Cathy Bruff -Carol Casey, Dallas B5. Joyce Anderson, Fort Worth ; Liz Castioni, Frisco C2. Judy Noble, Dallas ; Kevin Broderick, Midlothian C3. Judy Zipkes, Addison ; Rebekah Hahn, The Colony C4/5 Malley Gaulding -Marilyn Bick, Dallas C4/5 Stuart Nelan, Melissa ; Robert Bender, Plano

Sunday Open Choice Pairs -15.5 Tables / Based on 47 Tables A1. Bart Bramley -Norman Beck, Dallas A2BC1. Shawn Drenning -Jarek Langer, Austin A3. Stephen Sinclair, Garland ; Thomas Leberman, Plano A4. Jay Gibson -Martha Young, Dallas A5. Alan Hierseman, Olathe KS ; David Braverman, Overland Park KS B2. B J Sanders -Mark Sanders, Austin B3. Vernon Earl Hodge -Carolyn Motes Jr, Dallas B4. Gay Roach, Nacogdoches ; Jimmy Hubbard, Wills Point B5/6 David Haratyk -Truett Cates, Sherman B5/6 Leigh Anne Schmidt -Thomas Schmidt, Plano C2. Stephen Hoffman -Judith Hoffman, Fair Oaks Ranch 39.68%

Sunday Swiss Bracket-1 -9 Tables
1. Aaron Silverstein -Melanie Tucker, New York NY ; Brad Moss, Denver CO ; John Kranyak, Las Vegas NV 2. Dan Morse, Houston ; Petra Hamman -Hemant Lall, Dallas ; Nagy Kamel,

Plano

Sunday Swiss Bracket-2 -9 Tables
1. Kristen Onsgard, Dallas ; Stefanie Scott, Little Elm ; Harry Elliott, Cypress ; Emily Harrell, Shoal Creek AL 2. Larry Davis -Robert Donathan, Austin ; Virgil Massey, Driftwood ; Charlene Sands, Pflugerville

Sunday Swiss Bracket-3 -9 Tables
1. Robert Schmidt, Murphy ; Ari Sippola, Irving ; Milton Neher, Richardson ; Yaoguang Zhu, Austin 2. Jim Harp -Paul Taylor -Robert Scrimale, Dallas ; Edward Yetter, Garland

Sunday Swiss Bracket-4 -9 Tables
1. Gary Anderson -Anita Albert -Jerry Barrett, Austin ; Sharon Dameron, Cedar Park 2. Frank Durante, Addison ; Nancy Latner -Rosalind Smith, Dallas ; Susan Flick, Lucas

Sunday Swiss Bracket-5 -9 Tables
1. Robert Holliday -Liane Tsai, Plano ; Ann Parker, Dallas ; Gool Castleberry, Irving
2. Chris Anderson -Janet Folmar -Sudhir Shah, Dallas ; Randy Earle, McKinney

Sunday Swiss Bracket-6 -9 Tables
1. Jan Mogged -Charles Mogged Jr, Colleyville ; Rosalee Hacker, Southlake ; Virginia Farley, Arlington 2. Joe Cameron -Shirley Cameron -Mike Davis -Lyn Davis, Frisco

Sunday Swiss Bracket-7 -9 Tables
1. Mary Lynn Genovesi, Fairview ; Karen Cohen, Irving ; Floyd Gerwig, Plano ; Carla Joiner, Dallas 2. Robert Babb -Laurie Hartline-Babb -Michael Edwards -Sherlene Edwards, Georgetown

1st Afternoon Side Series -22.25 Tables / Based on 9 Tables
1. Florence Beaird, Dallas 2. John Spessard, Dallas 3/4 Janet McCormack, Dallas 3/4 Mary Pennington, Allen 5/6 Susan Flick, Lucas 5/6 Clint Pruett, McKinney

1st Evening Side Series -17.50 Tables / Based on 10 Tables
1. Scott Humphrey, Pflugerville 2/3 Thomas Smith, Austin 2/3 Sharon Dameron, Cedar Park 4/5 Robert Schmidt, Murphy 4/5 Ari Sippola, Irving

Monday A/X Swiss Teams -20 Tables / Based on 55 Tables
A1. Dan Morse, Houston ; John Sutherlin -Mark Bumgardner, Dallas ; Nagy Kamel, Plano A2X1. Eric Diamond, Plano ; Bob Friz, Leonard ; Jay Gibson -Martha Young, Dallas A3. Nancy Kornegay -Stephen Kornegay, N Richland Hls ; Barry Schaffer, Frisco ; Colby Vernay, Lacon IL A4. Kimmel Jones, Euless ; Michael Penick, Dallas ; Bill Staats, Southlake ; Hugh Hillaker, Grand Prairie A5. David Sokolow -Claudette Hartman -Tobi Sokolow, Austin ; Peggy Sutherlin, Dallas X2. Stefanie Scott, Little Elm ; Kristen Onsgard, Dallas ; Emily Harrell, Shoal Creek AL ; David Pearlman, Southlake

Monday B Swiss Bracket-1 -9 Tables
1. Stephen Birnbaum -Bob Butterfield -Eileen Smith -James McCommons, Dallas
2. Joseph Gill, Richardson ; Adrienne Feuer, McKinney ; Lee Huber, Rockwall ; Mark Hatkoff, Rowlett

Monday B Swiss Bracket-2 -9 Tables
1. Gary Anderson -Jerry Barrett -Anita Albert, Austin ; Sharon Dameron, Cedar Park
2. Ann Lewis -Carol Nicoud -Nancy Harralson -Lue Waddle, Dallas

Monday B Swiss Bracket-3 -9 Tables
1. Mike Davis -Lyn Davis, Frisco ; Cheryl Clark -Keith Mond, Dallas 2. Robert Holliday, Plano ; Ann Parker -Jon Wolkenstein -Sheri Wolkenstein, Dallas

Monday B Swiss Bracket-4 -9 Tables
1. William Higgins -Jean Higgins, Dallas ; Mary Lynn Trentham, Richardson ; Marjorie Deutsch, Fort Worth 2. J Scott Etchison -Judy Etchison, Dallas ; Robert Clarke -Alma Farley, Richardson

Monday B Swiss Bracket-5 -9 Tables
1. Jonathan Wang, Coppell ; Pingshan Wen, Allen ; Jun Li -Vivian Li, Richardson 2. Jerry Frankel, Plano ; Rosalind Smith, Dallas ; Mary Lynn Genovesi, Fairview ; Karen Cohen, Irving

Monday B Swiss Bracket-6 -9 Tables
1. Satish Shah -Harivadan Shah -Arvind Shah, Plano ; Rathnam Vasanthkumar, Dallas
2. Mary Williams -Barbara Wood -Margaret Ellis, Rockwall ; Wilton Crocker, Dallas

Monday B Swiss Bracket-7 -9 Tables
1. Robert Deboom -Rob Smith, Allen ; Robert Bender, Plano ; Stuart Nelan, Melissa 2. Mary Chaffin -Molly Hamilton, Dallas ; Paramjeet Ahluwalia -Nancy Lynd, Plano

Dallas Winter Election Sectional January 4-7, 2018

Richardson Civic Center SW Corner of Arapaho Rd. & US 75
(Central Expressway) Richardson, TX

Thursday, January 4

Stratified 299er Pairs (Single Sessions) 10:00 am & 2:30 pm
Stratified Open Pairs (Single Sessions) 10:00 am & 2:30 pm
Bracketed Swiss Teams (2 Session Event) 10:00 am & 2:30 pm

Friday, January 5

Stratified 299er Pairs (Single Sessions) 10:00 am & 2:30 pm
Stratified Open Pairs (Single Sessions) 10:00 am & 2:30 pm
Bracketed Swiss Teams (2 Session Event) 10:00 am & 2:30 pm

Saturday, January 6

Stratified 299er Pairs (Single Sessions) 10:00 am & 2:30 pm
Stratified Open Pairs (Single Sessions) 10:00 am & 2:30 pm
Bracketed Swiss Teams (2 Session Event) 10:00 am & 2:30 pm

Saturday Night Social-Stratified 299er Pairs and Open Pairs 7:00 pm \$5 Entry Fee

Sunday, January 7

Strati-flighted Swiss Teams - 2 Session Event 10:00 am
499er Swiss Teams - 2 Session Event 10:00 am
Stratified Open Pairs 2:00 pm

Stratifications

Pairs: A: 2500+, B: 750-2500, C: 0-750 (based on average mps)
299er Events: A: 299-200, B: 200-100, C: 100-0 (based on avg mps)
Strati-flighted Teams: A: 4000+, AX: 0-4000 (play together)
B: 3000-1500, C: 1500-500, D: 500-0 (play together)

Entry Fees: ACBL members \$13 per daytime session; unpaid and non-members \$16 per session. Sunday Swiss: \$104 for team of four. Players with 0-5 masterpoints play free Thursday, Friday and Saturday!

Saturday Night Social \$5!! for 7 pm games. Light dinner served. Tournament Chairman: Catherine Tucker (bridgelady47@gmail.com)

Partnerships: Mary Jane McGinnis (mjmcg1@att.net)

Fragrance Policy: Please refrain from the use of perfumes and colognes as many players have allergies.

Snacks and drinks every session; lunch provided during Sunday Swiss Teams games.

Speaker Program: I/N Speaker Program Friday & Saturday at 2:00 pm.

Tournament Director: Kevin Perkins

Hotel Info: (Ask for Dallas Bridge Association rate)

Wingate by Wyndham, 1577 Gateway Blvd., Richardson, TX 75080; Phone: 972-234-5400; Rate: \$79.

Courtyard by Marriott, 1000 S Sherman St, Richardson, TX 75081; Phone: 800-321-2211; Rate: \$74.

Don't forget to vote for Unit 176 Board members. Polls open 30 minutes before each game.

A brief annual meeting of Unit members will be held Sunday

Continued from page 3

Bridge in Austin

Geographical game options: There are a host of games supported by the Austin Unit Board. Though the BCA is the main central location and the largest club, there are also many clubs in surrounding areas. These include Kyle, Wimberly, Gaines Ranch, Senior Activity Centers, Georgetown, Westlake, Kingsland, La Grange, and Marble Falls. The BCA offers daily games and sometimes the Austin traffic scene can be challenging. The outskirts clubs supplement with proximity, convenience and a variety of playing times. Friendly environments and a cooperation between clubs make it easy to compete on a variety of levels.

The BCA and the Unit Boards: The bridge community volunteers work together to provide the best possible playing environment. There is a Milestone Luncheon held at the BCA and paid for by the Unit to honor advancing players. This combined effort cheers our players new levels! Dealing machines and Bridge-Mates are used by all at the BCA and it is a combined effort that brings them to Austin players. We use technology to print hand records and get results to the players! It makes it easier to learn and discuss our games.

Making it a fun place to be: The BCA hosts a birthday bash once a month to celebrate member birthdays. There are delicious cakes and the event date provides the opportunity for a free play for the honoree. There is bulletin board devoted to New Life Masters with a photo display. The Monday Madness evening game asks players to guess one's game percentage for the game and the closest one wins a free play. There is a Tuesday

Bingo game held right after the game and the winner gets a free play. Lifting interest in the success of players and their accomplishments fosters comradery.

Communication: We have a BCA Facebook page which posts photos advertises special events. (Family and friends love this!) There's a BCA Guide program and a partnership chair who works hard to pair visiting and new folks to the Austin area. There are two weekly email newsletters, one for the general population and one for novices. The Unit and BCA websites are continuously maintained with up to date information and announcements. Activities are announced in the Scorecard. There's a place to obtain flyers for advertising our Regional, NLM Regional, and sectionals.

Ongoing director training: There's a monthly meeting of directors at the BCA to discuss and update information. Sharing ideas and communicating makes the games run smoothly.

It's not too late to volunteer: We have been blessed with numerous members stepping up to fill positions and provide stability and continuity. Small tasks such as bringing a treat, washing a few dishes, cleaning up one's playing area, etc. make it a place where everybody does some and no one does it all! We encourage our members to help and we have fun doing it!

Let's continue to try new ideas: We opted to host the first Austin Non-Life Master Regional for the first time this summer. We are combining a Non-Life Master Regional with our Spring Sectional next year. It takes a village to grow bridge in Austin and we have a nice village!

DALLAS LABOR DAY REGIONAL CHAMPS



Tuesday Swiss Team Bkt 1
Thursday Swiss Team Bkt 1
Steve & Nancy Kornegay
Barry Schaffer, Colby Vernay



Tuesday Open Pairs Flight A
Jay Gibson, Martha Young



Wednesday Swiss Bkt 1
Mark Bumgardner, Bill Staats
Hugh Hillaker, Kimmel Jones



Wednesday Choice Pairs A
Jeff Dater, Tomi Storey



Friday Choice Pairs A
David Nurenberg, Jeanine Wofford



Saturday Swiss Bkt 1
Michael Pennick, Bill Staats
Hugh Hillaker, Kimmel Jones



Sunday Choice Pairs Flight A
Norman Beck, Bart Bramley



Monday AX Swiss X
Martha Young, Bob Friz,
Jay Gibson, Eric Diamond



Tuesday Swiss Bkt 3
Karen Roland, Connie Van Patter
Roz Smith, Jerry Frankel



Tuesday Swiss Bkt 2
Monday BCD Swiss Bkt 2
Sharon Dameron, Gary Anderson
Anita Albert, Jerry Barrett



Tuesday Stratified Pairs Flight C
John Moore, Stan Pushkarsky



Wednesday Swiss Bkt 6
Laurie Babb, Sherlene Edwards
Bob Babb, Mike Edwards



Wednesday Swiss Bkt 3
Gayle & Bob Orvis
Sharon & Ken MacMorran



Wednesday Swiss Bkt 4
Cheryl Rider, Jo England
Jim Rider, Pat Marchman



Thursday Swiss Bkt 2
Tomi Storey, Scott Nason
Jeff Dater, Milt Neher



Thursday Swiss Bkt 4
Marvin Migdol
NJ Tripode, Nick Weisz



Wednesday Gold Rush
Jack Hartel, Ramon Nelson



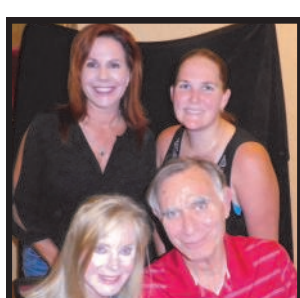
Saturday Swiss Bkt 3
Bob Butterfield, Steve Birbaum
Jim McCommons, Eileen Davidoff



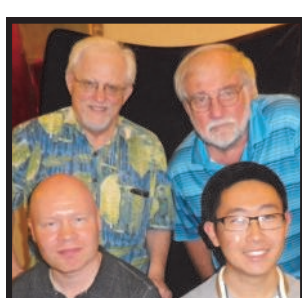
Saturday Swiss Bkt 4
Ed Yetter, John Moore
Bonnie Yetter, Roxann Swenson



Saturday Swiss Bkt 2
Beth & John Bromberg
Bryan Storey, Tom Edwards



Sunday Swiss Bkt 2
Stefanie Scott, Kristen Onsgard
Emily Harrell, Harry Elliot



Sunday Swiss Bkt 3
Bob Schmidt, Milt Neher
Ari Sippola, Yaoguang Zhu



Sunday Swiss Bkt 5
Gool Castleberry Liane Tsai
Bob Holliday, Ann Parker



Sunday Swiss Bkt 6
Chuck Mogged, Rosalee Hacker
Jan Mogged, Virginia Farley



Sunday Swiss Bkt 7
Mary Lynn Genovesi, Karen Cohen
Carla Joiner, Floyd Herwig



Monday BCD Swiss Bkt 3
Cheryl Clark, Lyn Davis,
Keith Monday, Mike Davis



Monday BCD Swiss Bkt 4
Jean Higgins, Marjorie Deutsch,
Bill Higgins, Lynn Trentham



Monday BCD Swiss Bkt 5
Jonathon Wang, Pingshan Wen,
Vivian Li, Jun Li



Monday BCD Swiss Bkt 6
Hari Shar, Satish Shah,
R Vasanthkumar



Monday BCD Swiss Bkt 7
Rob Smith, Robert DeBoom,
Stuart Nelan

Unit 183 Fort Western

Bill Walker



What do Steve Shirey, Hugh Hillaker, Arnold Jones, Linda Spangler, Nancy and Stephen Kornegay, and Kimmel Jones have in common? At first glance the answer is obvious. These

are among the top players in Unit 183, players who have all amassed over 10,000 master points. But possibly even more significant is that at one time, each of these outstanding bridge players had less than one master point. They were, in bridge parlance, novices.

And just what is it that makes novices significant? Without them, duplicate bridge will wither and ultimately die

out from lack of players. But where do these novices come from? In olden days we all started playing in open games and the fittest, or the people least subject to frustration, stayed with the game.

With the advent of master point restricted games, newcomers have the opportunity to compete and progress against their peers. As someone who has started four novice games in three

countries, I have special interest in those connected with the world of beginners. Special attention this month goes to the 0-499 Thursday Morning game at the Fort Worth Bridge House

Starting a few years ago as the brainchild of Jeri and Ken Quinton, the game now routinely draws six to eight tables. When asked why they undertook what can be a demanding venture, Jeri Quinton replied,

"Duplicate bridge needs new players. Beginners can get very discouraged playing against more experienced people and always finishing last. In our game they feel like they're on a level playing field where anybody can win." When asked about their personal feelings, she continued, "How can you not love these people. They're having fun, enjoying the game, making new friends, you name it." Some days I wonder if some of us

forget that bridge is a game to be played for enjoyment. Certainly Jeri and Ken Quinton haven't. In due recognition, following are results of the 0-499 game from October 12: Overall winners:

A1B1 Wayne Corbett and Sandy Beyer, A2 James Atteberry and Michael Blanchard, A3B2 Debbie Sanders and Ruby Day, A4B3 Randy Eads and Sandie Conner, B4 Virginia Chadwell and Judith Mackey.

Eight is Enough games always seem to be fun and the Fort Worth October 21 game was no exception. Starting with a German style lunch compliments of Darlene Shirey, ten tables went at it.

Winners were:

A1B1 Jan and Charles Mogged, Letty Garek, Rosalea Hacker. A2/3 Linda Spangler, Bruce Mann, Jane Larimore, Jane Cote A2/3B2 Bill Ream, Ginny Collett, Milt Birmingham, Susan O'Neil A4B3 Patsy Walters, Ann Kenemer, Jan and Bill Walker

B4 Lauren Brown, Shelby Schafer, Mary Jane Orock, Jacque Montgomer

Our esteemed player, teacher, and author, Mary Jane Orock recently obtained her Emerald Life Master. Winning over 7500 master points is some accomplishment. Congratulations from all of us. Making it even better was a surprise party given her by Kay Jones. Kay also presented Mary Jane with a green umbrella to use when she plays golf, her other passion. Hint: don't play either game against Mary Jane for money . . . you'll likely lose.

In the same vein, at a recent board meeting, Unit 183 Board Members surprised our Prez, David Pearlman, with a party celebrating his becoming a Diamond Life Master.

Unit 183 donated the net proceeds of a Unit game plus cash contributions to the Rockport Bridge Club. This totaled \$1138. Rockport had their club house commandeered by FEMA as part of the Hurricane Harvey relief.

In our last edition it was noted that the Granbury Bridge Club had raised over \$11,000 during the Longest Day Alzheimer charity event. No doubt that was impressive. Just how good an effort became apparent when the Oc-

tober ACBL Bulletin arrived. Granbury finished 17th nationwide in fund raising. Quite a showing! The Bulletin also included a photograph of Fitz Fitzgerald and some of his Granbury players on that day.

Congratulations to our new and returning Unit 183 Directors of the Class of 2020. To Janet Jordan, Cynthia Benton, and Sue Rowe we all wish you good luck and a humongous thank you for taking on what can be a truly thankless job.

Finally, a special request to all Club Managers, Directors, and players. Please let me know when anyone does anything outstanding. Scorecard is our newspaper and while I'd love to be everywhere at once - just can't do it. So, again, please keep me informed.

Fort Western Election Sectional

Oct 06-08, 2017
229 players.: 204 tables.

- 1 28.40 Stephen Kornegay, N Richland Hls
- 2 28.40 Nancy Kornegay, N Richland Hls
- 3 28.40 Nagy Kamel, Plano
- 4 28.40 Mark Bumgardner, Dallas
- 5 25.74 John Schwartz, Plano
- 6 25.74 Gerry McKim, Garland
- 7 25.49 Milton Neher, Richardson
- 8 20.25 Pawel Hanus, Carrollton
- 9 19.88 Yan Song, Plano
- 10 19.88 Tiger King, Plano

Friday Aft Open Pairs-10.5 Tables / Based on 16 Tables A1. Don Reynolds -Robert Buchanan A2. Linda Spangler -Billy Leeper B1. Jimmy Justice-Paula Justice B2. Bruce Mann-Margot Hirsch C1. Susan S Doe-John Robbins C2. Judy Floyd-Jane Clark

Friday Aft 299er Pairs-5.0 Tables ABC1. Rodney Wood-Joan Wood A2. Hal Spottswood-Laura Paulsen BC2. Wayne Corbett-Jan Agee

Fri Eve Strat Open Pairs-7.5 Tables AB1. Tom Moore-Dorothy Moore A2. Don Reynolds-Robert Buchanan B2C1. Anne Goodman-Gano Ehlers C2, Robert Dixon-Dave Romack

Friday Swiss Bracket 1-7 Tables 1. Scott Nason-Florence Beaird-Eric Diamond-Milton Neher 2. Nancy Kornegay-Stephen Kornegay-Mark Bumgardner-Nagy Kamel

Friday Swiss Bracket 2-7 Tables 1. Larry White-Mike Peiffer-Jim Nixon-Judy Nixon 2. G Morey-Charles Gibson Jr-Mickey Tryon-Stephen Bennett

Friday Swiss Bracket 3-7 Tables 1. Annie Mason-John Mason-Wayne Williams-James Atteberry 2. William Higgins-Jean Higgins- Marjorie Deutsch- Mary Lynn Trentham

Saturday Aft Open Pairs-9.5 Tables A1. Bart Bramley-Norman Beck A2. Jeff McKee-Greg Resz B1. Penny Mixon-Marlene Round B2. Kay Jones -Jane Clark C1. Kenneth McDowell-Patricia McDowell, Granbury C2. John Moore-Roxann Swenson

Saturday Aft 299er Pairs-5.5 Tables AB1. Marilyn Norton-Shelby Beazley A2. William Garner-Hal Spottswood B2. Barry Malone-Al Mince

Saturday Swiss Bracket 1-7 Tables 1. Nancy Kornegay-Stephen Kornegay - Nagy Kamel- Mark Bumgardner 2. John Schwartz-Gerry McKim-Pawel Hanus- Bob Wilkin

Saturday Swiss Bracket 2-7 Tables 1. G Morey-Mickey Tryon-Stephen Hibbard-Stephen Bennett 2. Larry White-Mike Peiffer-Sue Gilbreath-Charles Brown

Saturday Swiss Bracket 3-11 Tables 1. Judy Nixon-Jim Nixon-Jeanette McDonald- James Cothran 2. Mary Lynn Trentham-Marjorie Deutsch-Rosalee Hacker- Khalifa Ahmed

Saturday Morn Open Pairs-8.5 Tables / A1. Bill Ream-Shelba Parmley B2. Don Reynolds-Gary Neisler BC1. Frank Vlach-Karen Vlach C2. Tom Moore-Dorothy Moore C2. Deanna Davis-Mark Dumdei

Saturday Morn 299er Pairs-7.0 Tables A1. Carlene Stewart-Harold Schulz A2BC1. Rodney Wood-Joan Wood B2, Barry Malone-Al Mince C2. Tracy Stanley-Susan Economy

Sunday A/X Swiss Teams-10 Tables / Based on 29 Tables AX1. Hua Yang-Yan Song-Tiger King-Lunhui Lin AX2. Bogumil Knypinski-Pawel Hanus-Nancy Fellman-Elaine Wood

Sun StratFI B/C/D Swiss-19 Tables B1. Stephen Birnbaum-Bob Butterfield-Elda Kay Hampton-James McCommons B2C1. John Moore-Roxann Swenson- Pamela Gladysz-Jane Clark C2/4 Jan Mogged-Charles Mogged Jr, Rosalee Hacker-Khalifa Ahmed C2/4 Judy Floyd-Melba Clark-

Don Farrell-Ann Curry C2/4 Mary Lynn Trentham- Jane Larimore-Marjorie Deutsch-Jacqueline Montgomery D1. Janet Jordan-Cornelia Friedman-Shelby Schafer-Wayne Williams-Laura Nash D2. Craig Briney-Mary Ann Briney-Dwight Hill -John Robbins

FORT WESTERN SECTIONAL

January 26-28, 2018

Radisson Hotel Fort Worth South

Friday, January 26

Bracketed Swiss Teams 1:30 p.m. & 7:00 p.m.
Stratified Open Pairs (Single Session) 1:30 p. m. & 7:00 p.m.
Stratified 299er Pairs (Single Session) 1:30 p. m. & 7:00 p.m.

Saturday, January 27

Bracketed Swiss Teams 10:00 a.m. & 3:00 p.m.
Stratified Open Pairs (Single Session) 10:00 a.m. & 3:00 p.m.
Stratified 299er Pairs (Single Session) 10:00 a.m. & 3:00 p.m.

Sunday, January 28

Bracketed "B" Swiss 10:00 a.m. & TBA
A/X play together (A-5000+) (X -0-5000)
Lunch is served between sessions

Tournament Chair

Janet Jordan (817) 797-9465) janetjordan817@yahoo.com

Partnership Chair

Darlene Shirey (817) 292-4719 shireysa@yahoo.com

All single sessions \$12 per player – Sunday Swiss \$100 per team
Additional charge of \$3 per session for players who are unpaid or non-ACBL members
Players with 0-20 MP play FREE on Saturday morning
Speaker 6:15 Friday evening

Radisson Hotel Fort Worth South

100 East Altamesa Boulevard
Fort Worth, TX 76134
(817) 293-3088 – ask for corporate rate
All rooms \$69.00 plus tax per night (King or 2 Queens)
Reservation deadline: January 18th

FORT WESTERN ELECTION SECTIONAL WINNERS



Friday Afternoon Pairs A
Buck Buchanan, Don Reynolds



Saturday Swiss Bkt 1
Nancy Kornegay, Mark Bumgardner,
Steve Kornegay, Nagy Kamel



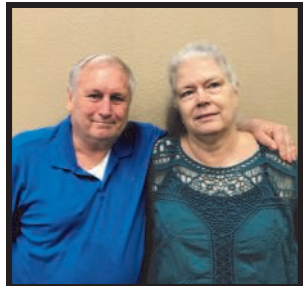
Saturday Morning Pairs A
Shelba Parmley, Bill Ream



Sunday Swiss A
Lunhui Lin, Yan Song, Hua Yang, Tiger King



Friday Afternoon Pairs C
Susan Doe, John Robbins



Friday Evening Pairs B
Tom & Dorothy Moore



Friday Evening Pairs C
Gano Ehlers, Ann Goodman



Friday Swiss Bkt 3
John & Annie Mason,
Jim Atteberry, Wayne Williams



Friday Swiss Bkt 2
Judy Nixon, Larry White,
Jim Nixon, Mike Peiffer



Friday 299ers
Rod & Joan Wood



Saturday Swiss Bkt 2
Steve Bennett, Mickey Tyron,
Steve Hibbard, George Morey



Saturday Swiss Bkt 3
Judy Nixon, Jeanette McDonald,
Jim Nixon, James Cothran




Sunday Swiss B
Bob Butterfield, Stephen Birnbaum,
Elda Kay Hampton, Jim McCommons



Sunday Swiss C
Pamela Glasysz, Jane Clark
John Moore, Roxann Swenson

**Unit 187
Corpus Christi**



Melissa Plumb

Unit 187 would like to wish all affected by Hurricane Harvey a speedy recovery. Our Rockport friends saw much devastation, but they are still holding their games at the women's club.

We are saddened by the passing of our club member Peggy Kennedy. She was a beautiful woman who enjoyed playing bridge with many fellow members. More times than not, she would not come empty handed, as she took joy in cooking for our club. We offer our condolences to her family and friends. She will be dearly missed.

In upcoming events, Unit 187 would like to welcome all to our annual Christmas party to be held on Sunday, December 3rd at 2:00 p.m. at the South Texas Bridge Club. Come help us celebrate with fellowship, food, and bridge!

Please meet our newest member, Dave Hobson. Dave, one of four children, was born to Doanld and Elizabeth Hobson in Capetown, South Africa. His first exposure to bridge was at an early age where he watched neighbors play rubber bridge. Dave's first introduction to playing bridge began during his college days. He would play rubber bridge with friends constantly, sometimes lasting late into the night.

In 1975, Dave married his love, Jennifer. They have two daughters, Kathryn and Suzanne, and four granddaughters aging from 3-6 years old. He is blessed to be surrounded by his family.

Dave continued to play rubber bridge after college for five years until his eldest daughter was born in 1980. Working in the computer industry, a job opportunity moved the Hobson family to the diamond mining town, Oranjund, Namibia in 1988. It was here that Dave was introduced to duplicate bridge. He continued to play duplicate and in 1989 he and his partner won the his division at the Namibia National Championships. After two years in Oranjund, he and his family returned to Capetown where he eventually joined a bridge club with his brother-in-law.

In December of 1998 the Hobson family ventured to the United States where he continued to work in the computer industry and Jennifer as a teacher. In 2000, Dave also opened his own business, while still working his other job. It wasn't until his retirement from the computer industry in 2016 and the selling of his business in April of 2017, that Dave would

consider playing bridge again. In June of 2017, he and his wife moved to Portland, TX. It was the following month that Dave called our club looking for a bridge partner. He joined ACBL and has been playing regularly at the club. He has been a great addition to Unit 187.

Aside from bridge, Dave enjoys golfing and fishing. He and Jennifer love to travel. They have visited Europe, North America, Central America in addition to other parts of Africa. He is fluent in English and Afrikaans. We are delighted to have him in our club. Happy Holidays!

melissaplumb187@yahoo.com

**Unit 197
Lubbock**

Sandi Krahrmer

Hi Everybody!

Charlotte and Gary Blaiss had a 70% game, and Gary also had one with Robbie Butts. It is so good to see Charlotte back playing. We all

enjoy her and always learn something from her. She is always so gracious, and both she and Gary are always ready to answer any questions

any of us may have.

I am sad to announce the death of Bob Whittaker. Bob and his wife, Faye have been long time members of our Unit. They were in charge of

hospitality at one of our Regionals and contributed many snacks out of their own pockets. They are the parents of Gwen Wright, and we

offer her our deepest sympathy.

Please be careful about coming to play when you are sick. We have so many people with serious illnesses who don't need any of your germs. Please be considerate.

Ava Huddleston is home from the hospital and waiting for the doctors to decide what to do for her. She is in good spirits and our prayers are most welcome. She needs a heart valve replacement.

We are pleased to welcome Ginny Reinier into our fold. Ginny recently moved here from Fort Worth and is a Life master. Ask her to play if you want a good partner. She is a nice lady and is very eager to play in our games.

Looking ahead--there will be a Christmas luncheon Dec. 15. I don't

know any details about whether it will be catered or potluck. Also, Bonta's scramble will be the last Sat. in December. I am sure Bonta and Julie will have some kind of a celebration planned. Since 8 is Enough has been done away with, this is the only chance the less-experienced players have to play with a Life Master unless they play on Thursday night or Sat. afternoon. The draw a partner is always fun, and the food is always plentiful and delicious.

That's about all our news. Have a wonderful Holiday season. Sandi Krahrmer

**Unit 201
Sabine Neches**



Linda Briggs

Hurricane Harvey presented serious challenges for U201. Over 20 members had their homes flooded, many of them with few options to continue to live in our area. President **Carolyn Worsham** headed the effort to help them out by collecting \$10,500 from U201 members, family and friends and distributed to each of the 21 members.

The week after Harvey hit, Beaumont's water crisis and flooded roadways kept the games from resuming until Labor Day, which usually is a party. However, having five tables was an optimistic sign. Slowly attendance has increased to slightly below pre-Harvey levels, and hopefully those members who were hit will come back to bridge.

Nancy Smalley taught lessons in September 12 through October 17 for beginners and those who wanted to move beyond the basics of bidding and playing.

Thanks to **Frances Price** for chairing the Beaumont August Sectional for 499ers/Non-LM, and thanks to **Nat Hallmark and Nixie Lynch** for all of their help. They did a yeoman's job, and a good time was had by all. High point winners from U201 were **Nixie Lynch and Carolyn Oliver (7.92), Betty Kirwin (4.38), Bob Hood and Joe Kazmar (3.40), Susan Gore and Lou Rising (3.29), Jerry Gore and Bob Townley-Smith (3.09), and Nathalie Hallmark (2.78)**. Trophy winners included **Bob Hood and Joe Kazmar, Judy Lofton and Kelli Cobb, Lou Rising and Susan Gore, Nixie Lynch and Carolyn Oliver (2), Michael and Carolyn Lemons, James and Flo Ferguson, and Bob Townley-Smith and Jerry Gore**.

The highest monthly totals for August

were **Dr. A. Bharathi, Carolyn Oliver, and Sandra Allison**; September – **Pat Bell, Dr. A. Bharathi, and Martha Sigler**.

Players with 70% or above games in August/September were **Dr. A. Bharathi and Tipton Golias, Bob Hood and Joe Kazmar, Mike and Carolyn Lemons, Carolyn Oliver and Nixie Lynch, Paul Keedy and Linda Briggs, Pat Bell and John Kacher**.

August mentor pairs placing: 1st – **Jerry Gore and Steve Gerhard**; 2nd – **Susan Gore and Dr. A. Bharathi**; 3rd – **Helen Williams and Tim Stelly**;

August mentor teams placing: 1st – **Carolyn Oliver, Paul Keedy, Sandra Allison and Anna Smith**; Tied for 2nd – **Betty Kirwin, Cynthia Stueber, Norma Crane, and Patsy Pierce**; **Lou Ida Rising, Dr. A. Bharathi, Sylvia Street, and Pat Bell**.

September mentor pairs placing: 1st – **Sylvia Street and Pat Bell**; 2nd – **Helen Williams and Tim Stelly**; Tied for 3rd – **Reggie Cox, and Marian Jones; Lucille Armintor and Linda Briggs**. September mentor teams placing: 1st – **Sylvia Street, Pat Bell, Gail Griffith, and Martha Oliver**; 2nd – **Sandra Allison, Anna Smith, Carolyn Oliver, and Flo Gillispie**.

Plans are underway for the October 12-14 Sabine Neches Sectional Tournament, chaired by Liz Mackenzie and E.W. Sweeney. Sandra Allison will head up partnership.

Beaumont Fall

Oct 12-15 2017
79 players. 99 tables

- 1 18.79 Aiyandar Bharathi
- 2 17.70 Nancy Smalley
- 3 11.90 Wilbur Dahlquist
- 4 11.90 Verna Dahlquist
- 5 11.47 Tim Stelly
- 6 11.47 Robert Kacher Jr
- 7 11.40 Edward Rasmussen
- 8 10.47 Arline Meyers
- 9 10.30 Mack Meigs
- 10 9.87 Marilyn Adams
- 11 9.87 Anton (Tony) Haddad

Thu AM Open Pairs-9.5 Tables / Based on 13 Tables A1. Nancy Smalley-Cynthia Stueber A2. Verna Dahlquist-Wilbur Dahlquist B1. Linda Briggs -Carolyn Worsham B2. Mack Meigs-Mike Floyd C1. Paul Keedy-Sandra Allison C2. Susan Nimmo-Jim Walker
Thu AM 299er Pairs-3.0 Tables A1. Robert Hood-Joseph Kazmar A2B1. Ronnie Martin-Russell Chandler B2. Bonnie Loudin-Edith Purgason
Thu Aft Open Pairs-10.5 Tables / Based on 15 Tables A1. Verna Dahlquist-Wilbur Dahlquist A2B1. Marian Jones-Regina Cox B2. Phyllis Ryan-Loretta Gary C1. Paul Keedy-Sandra Allison C2. Karen Jennings-Marianna Carpenter
Thu Aft 299er Pairs-4.0 Tables

AB1. Bonnie Loudin-Edith Purgason A2. Nixie Lynch-Carolyn Oliver B2. Thomas Hatfield-Mary Hatfield
Fri AM Open Pairs-11.0 Tables / Based on 15 Tables A1. Nancy Smalley-Aiyandar Bharathi A2. Joan Hataway-Arlene Meyers B2C1. Jeannie Stone-Laura Chandler C2. Patricia Schiwart-Lou Rising
Fri AM 299er Pairs-4.0 Tables A1/2 Robert Hood-Joseph Kazmar A1/2B1. Ian Fetterley-Bonnie Loudin B2. Bobbie Carson-Ferrel Ashby
Fri Aft Open Pairs-13.5 Tables / Based on 17 Tables A1 Tony Haddad -Marilyn Adams A2. Michael Bossert -Sara Bossert B1. Mack Meigs-Mike Floyd B2C1. Ronnie Martin-Darlyn Dusek B2. Karen Jennings-Marianna Carpenter
Fri Aft 299er Pairs-3.0 Tables A1. Ferrel Ashby-Bobbie Carson A2. Nixie Lynch-Carolyn Oliver
Sat AM Open Pairs-12.5 Tables A1. Martha Sigler-Flora Gillispie A2. Mark Meigs-Mack Meigs B 1. Marian Jones-Regina Cox B2. Robert Kacher Jr-Tim Stelly C1. Karen Jennings-Martha West C2. Richard Carpenter-Marianna Carpenter
Sat Aft Open Pairs-10.5 Tables A1. Edward Rasmussen -Aiyandar Bharathi A2B1. Richard Carpenter-Marianna Carpenter B2. Tim Stelly-Robert Kacher Jr C2. Gertrude Cherry-Elizabeth Mackenzie

Continued from page 3

Platinum LM

I would like to offer some advice to newer players. First develop a system that you like to play. Preferably, you should write it up as your system notes. It amazes me the people who think it is silly to have notes. The joke was that Meckstroth and Rodwell had 100 pages of notes on their system and 100 pages of notes on things Jeff forgets. Next discuss your system with your favorite partners and agree on a common card. This approach will reduce strain on your memory.

Secondly, read you card over before the game starts. Zeke Jabbour said that reviewing his card before a game had saved him a ton of match-points. When reviewing your card, pay particular attention to those things that occur infrequently; Flip-Flop, Leaping Michaels, Unusal vs Unusal, etc. This may save you from passing your partner in a Cuebid.

Third, "count-count". If you are defending 1NT, and you see 5HCPs in dummy and you have 10HCPs, you know that partner has 8-10HCPs. As the hand unfolds, you can usually quickly learn what cards partner holds and defend accordingly.

In the future, I hope to play a little more at Nationals and less at Regionals and Sectionals.

Marion Gebhardt

SABINE NECHES SECTIONAL WINNERS



Thursday Morning Open Pairs A
Nancy Smalley, Cynthia Stueber



Thursday Afternoon Open Pairs A
Wilbur & Verna Dahlquist



Friday Morning Open Pairs A
Aiyandar Bharathi



Saturday Morning Open Pairs A
Martha Sigler, Flora Gillispie



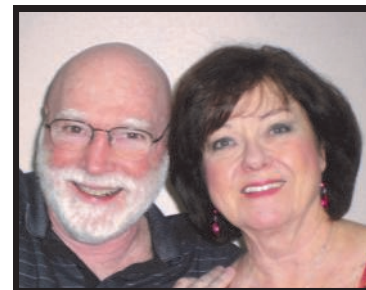
Friday Afternoon Open Pairs A
Tony Haddad, Marilyn Adams



Thursday Morning Open Pairs B
Carolyn Worsham, Linda Briggs



Thursday Afternoon Open Pairs B
Saturday Morning Open Pairs B
Marian Jones, Regina Cox



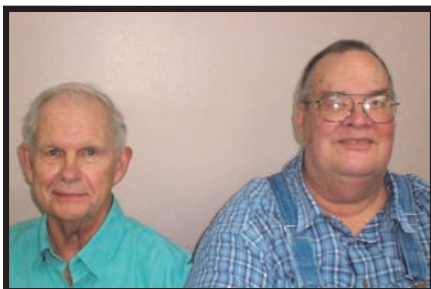
Thursday Morn & Aft Open Pairs C
Paul Keedy, Sandra Allison



Friday Morning Open Pairs B
Robert Kacher, Tim Stelly



Friday Morning Open Pairs C
Jeannie Stone, Laura Chandler



Friday Afternoon Open Pairs B
Mike Floyd, Mack Meigs



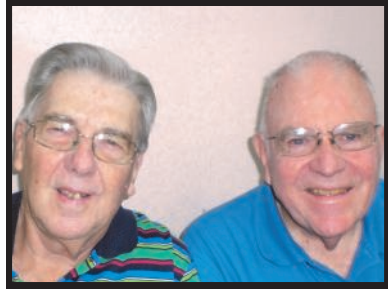
Friday Afternoon Open Pairs B
Ronnie Martin, Darlyn Dusek



Saturday Morning Open Pairs C
Martha West, Karen Jennings



Saturday Afternoon Open Pairs B&C
Richard & Marianna Carpenter



Thurs & Fri Morning 299ers
Joseph Kazmar, Robert Hood



Thursday Aft 299ers
Bonnie Loudin, Edith Purgason



Thursday Morning 299ers
Ronnie Martin, Russell Chandler



Friday Morning 299ers
Ian Fetterley, Bonnie Loudin

Unit 204
Fort Concho

Larry Hettick

In memoriam: On Saturday, August 13, a large number of our San Angelo bridge group attended the memorial service for Gene Warren, husband of our good friend Iris Warren. After the service the group gathered with friends and family at the Shrine Temple for lunch. Our bridge group helped the Shriners with the lunch and enjoyed meeting and visiting with the family. Gene was loved and respected by many and will be greatly missed.

In celebration: Dave Watson and Barbara Wright have been tearing it up in the local bridge room: since our last report they have scored a 68.06% game (in late August) and a 70.83% game in October. Not to be outdone, Louetta Green and Iris Warren scored a 71% game. On the road again, Peggy Jackson and Judy Matthews won an Open Pairs event at the recent tournament in Ruidoso, while Charlotte Sisco and Kathy Dickson placed in "over-alls" at the same tournament.

As a relative newcomer to playing duplicate bridge, one of the things I enjoy most about our club is the large number of "bridge veterans" who are always ready to offer some stiff competition and to help me learn. In this column, I'd like to call out two special ladies who shared their perspectives on the game—focusing the spotlight on Louetta Green and Virginia (Ginny) Noelke.

Ginny has been playing bridge for over 65 years, and competing in duplicate bridge games for over 40 years. In her first duplicate game, Ginny, already nervous, forgot her glasses which made for an interesting evening! Still, she has persisted and continues to enjoy the game. Her advice to new players who want to get better: 1) play a lot, 2) learn to count (especially as the game is going on), and 3) concentrate. Ginny advises that sometimes you need to "love the misery" as you get better—remembering that this is a game that can keep getting interesting even after 65 years of play. Ginny also says bridge always offers you the chance to learn and improve.

Louetta, who has been playing for 50 years, started out playing "party bridge" and then moved to duplicate. One of her bridge playing highlights was playing with Oswald Jacoby at the local bridge club here in San Angelo. She gave her insights on how bridge has changed over those five decades. For example, conventions have evolved significantly: when she started off popular conventions included the Color Cue, Landry, and the Big Club. The biggest change has been in scoring: back in the days, three was no stratification so points were much harder to get for novices, and there was no electronic calculation or transmission of scores. Bridge

director did the calculations on large worksheets, and individual scores were recorded on small slips of paper then forwarded to the ACBL for posting via old-fashioned mail.

Thanks to Ginny and Louetta for sharing their experience at the tables and for this column. We'll see you next time with who advanced in our upcoming NAP games, and one or two more personal stories.

Unit 205
Amistad
Western Mexico

Mary Ann White



To say it's been a difficult few months might be the understatement of the year. And so we want to send our best wishes to all of our friends in District 16 who have been affected, directly or indirectly, by Hurricanes Harvey, Irma, and Maria; the earthquakes in and around Mexico City; and the mass shooting in Las Vegas. Looking forward to a peaceful and joyous holiday season, and wishing everyone else the same, as we gather our families and loved ones together to give thanks for our many blessings. It's also time to welcome back our seasonal bridge clubs in Puerto Vallarta, Mazatlan, and Cabo, and to say hello to our friends from Canada who are joining us for the winter.

Supervised bridge at the Lake Chapala DBC commences on Wednesday, November 1. This is a great program run by Catherine Gonzales. We appreciate her time and effort to get to know each of her players, welcome them, and provide them with an interesting lesson and enjoyable bridge experience. She must be doing something right, because they keep coming back year after year! And we always have a few newcomers as well.

The Lake Chapala DBC participated in two Inter-Club Championship Games in August and September. Bill Heim and Tom Gillett were the winners on August 8 with 64.12% (9 tables). That was good enough for 22nd place overall with over 300 pairs participating. And on September 25, it was Jeane Treloar and Charles Chartier who brought home the victory with 63% (3 tables).

Club Championship games were held at the LCDBC the week of September 11. Open Pairs winners were Gaylord Brockway and Charles Chartier, in a tie with Diane van Brocklin and Mike Roney, on September 11 (60.43%; 5½ tables); Mike Roney and Lew Crippen with 64.58% on September 12 (9½ tables); Catherine Gonzales and Louise Morel with 69.31% on September 14 (8½ tables); and Diane van Brocklin and Charles Chartier with 69.44% on September 15 (5½ tables). Winners of the 299r Club Championship game on September 15 were Nancy Segall and Martha Hefron, who tied with Carol van Parys and Deborah Camp-Simpson at

59.38% (4½ tables).
Congratulations to Norinne and Dick Nelson, who scored 71.50% on August 18 (5 tables).

Congratulations also to Lee Wagar of the LCDBC for achieving the rank of Junior Master! Way to go!

For those who thought this day would never come, it's true. Long-time stalwarts of the Lake Chapala DBC, Norinne and Dick Nelson, are packing up and moving to Hot Springs Village, Arkansas. (Insert tearful emoji here.) Lest we let our bridge skills languish while they are gone, however, remember they will be returning in the summers to keep us on our toes. In all seriousness, they will be missed, and we wish them nothing but the best as they embark on this new adventure together. Look out Village Card Club—here they come!

In Memoriam. It's time to bid a final farewell to two long-time Lake Chapala DBC players. Jane Payette passed away on July 22. Jane retired to Lake Chapala in 2004. In addition to bridge, Jane enjoyed playing golf, home design, and cooking. She volunteered to teach English as a second language at the Lake Chapala Society and at her home, and lent her voice to an audio book project to help vision impaired students. Jane's life was celebrated with a memorial reception on September 1 in honor of her 85th birthday. Also, Pepper Drebes left us on October 1. Although she hadn't been at our Club recently, Pepper was a wicked bridge player, always rising toward the top of the daily results. Finances were tight, but throughout her stint at Lakeside, she continued to supplement her income by doing court translations. Jane and Pepper will both be missed by their many friends in the Lake Chapala area.

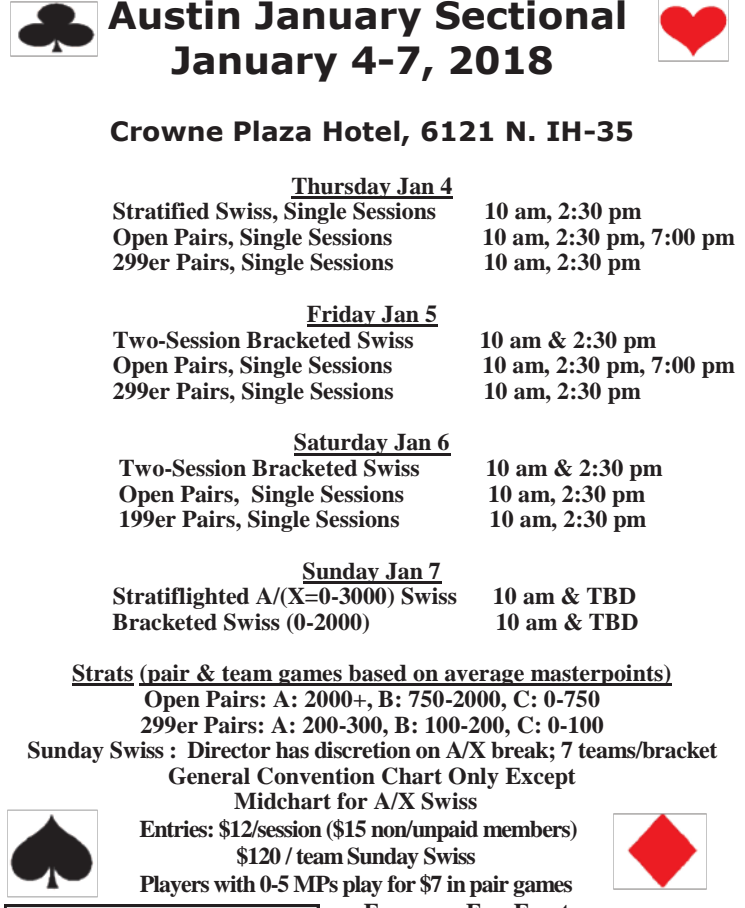
Unit 207
Austin

Sandy Potts



Upcoming events:
November 11-12: I/N Sectional
November 18: Member appreciation; two session Swiss with lunch, free to Unit 207 members
December 2-3: I/N Sectional
December 16: Holiday Party; two sessions with lunch, free to Unit 207 members
January 4-7, 2018: Unit Sectional (more later)

Milestones: 100 points: Mark Alpert, Bama Hill, Zaeem Lutfi, Emil Russiello, Cindy Bell, Ralph Bretschneider, Ken Davis, Suzanne Deaderick; 200 points: Sue Alt, Orlin Johnson, Nola Ray, and Marion Shimmion; 300 points: Jarek Langer; **New Life Master:** Janet Hawk, Nell Sanders, George Steele, and Yaoguang Zhu; **Bronze Life Master:** Gary Anderson, Nell Sanders, William McIndoo, and Julie McKenna; **Silver Life Master:** Kate Adams, Dan Baker, Jerry Barrett, Lucerne



Austin January Sectional January 4-7, 2018

Crowne Plaza Hotel, 6121 N. IH-35

Thursday Jan 4
Stratified Swiss, Single Sessions 10 am, 2:30 pm
Open Pairs, Single Sessions 10 am, 2:30 pm, 7:00 pm
299er Pairs, Single Sessions 10 am, 2:30 pm

Friday Jan 5
Two-Session Bracketed Swiss 10 am & 2:30 pm
Open Pairs, Single Sessions 10 am, 2:30 pm, 7:00 pm
299er Pairs, Single Sessions 10 am, 2:30 pm

Saturday Jan 6
Two-Session Bracketed Swiss 10 am & 2:30 pm
Open Pairs, Single Sessions 10 am, 2:30 pm
199er Pairs, Single Sessions 10 am, 2:30 pm

Sunday Jan 7
Stratified A/(X=0-3000) Swiss 10 am & TBD
Bracketed Swiss (0-2000) 10 am & TBD

Strats (pair & team games based on average masterpoints)
Open Pairs: A: 2000+, B: 750-2000, C: 0-750
299er Pairs: A: 200-300, B: 100-200, C: 0-100
Sunday Swiss : Director has discretion on A/X break; 7 teams/bracket
General Convention Chart Only Except Midchart for A/X Swiss
Entries: \$12/session (\$15 non/unpaid members)
\$120 / team Sunday Swiss
Players with 0-5 MPs play for \$7 in pair games
Fragrance Free Event

Chairpersons

Jo Dee Bowen
jdbowen14@att.net
512-657-7506

Rachell Jackson
rachellann.tx@gmail.com
512-351-1060

Partnerships

Martha Norman
mellenrowe@gmail.com
512-917-3534

Hotel

Crowne Plaza
6121 North IH-35
512-323-5466
\$99/night
Book by 12/8/2017

Bunch, Sharon Dameron, and Martha Norman; **Ruby Life Master:** Stan Pushkarsky; **Sapphire Life Master:** Joe Black
Way to go, Austin players! Great to see folks doing well!

Terry Richardson was on the team that won the Mini Spingold event in Toronto. This is quite an accomplishment. Good for you, Terry!

Our first Non-Life Master Regional was held in August. Chair Sally Sassen, Partnership Chair Tracy Bruce and Hospitality Chair Laraine Johnston did excellent jobs organizing and hosting this event. Thanks to Larry Davis and George Watkins for their extra support in setting up behind the scenes and for all who gave their time to assist. We would like to particularly thank the Bells and the Oliphants for their voluntary efforts making this tourney a success! And a very special thanks to Scott Humphrey, the Director in Charge, for ensuring it was a positive and productive experience for the players. Attendance was good but lower than expected, due to the foul weather of Hurricane Harvey. Our Texas Pride salutes the variety of support given to

those affected Hurricane Harvey, and we wish all a speedy recovery.

What's happening for newer players? A LOT! The BCA has many dedicated teachers including Jack Lacy, Laura Delfeld, Sally Sassen, Gayle Moyers and others.

What's happening for more advanced players? A LOT! The Austin bridge community has a wealth of knowledge. I have been impressed over the years by Charlene Sands, Virgil Massey, Scott Humphrey, Pam LaShelle, Marilou Powell, Gary Powell, Larry Davis, George Watkins, Beth Tobias, Leonard McCormick, Paul Tobias, Bob Bockmuehl, Joyce Cooper, Jack Lacy, Linda Neuen-schwander, Dean Trauir, Mary Anne Laier and MANY others who share their love of this game. Folks care about passing on the tradition of bridge to those of us who want to learn. As we all advance, let's try our best to encourage others and do what we can to help.

Isn't it also fun to see folks get their life master? I remember being SO excited. I've enjoyed watching the progress of those around me. There

are many teams formed to help someone get that last "elusive" gold. James Moody, Tom Smith, and Rachell Jackson were delighted to assist Nell Sanders in getting her last bit of gold in Richardson. Congratulations, Nell.

Never hurts for us to say thank you for the unspoken help we are given! Never hurts to show a bit of kindness...to your partner, to a person needing a bit of assistance, to a fellow newer player, to an older player having a hard day. You may see others. Please send me a note at sandy.potts5@yahoo.com

Ever wonder what it would be like to have bridge without places for newer players to learn, get a bit of confidence? Gayle Moyers is now offering a Saturday lesson at 1:00 PM, followed by assisted bridge play (notes, questions from instructor). This is a limited 0-50 game. Tracy Bruce is directing the open game, but together they have brought a place for newer players to feel "safe," have some fun, and practice their bidding and play. Can't ask for a more enticing place for a beginning bridge player! Come have some fun! Check the BCA website to make sure the game is being held on a Saturday. (Sometimes there is a tournament or other event that conflicts.) Be sure to check it out first! www.bridgecenteraustin.com

We welcome a new bridge club to our Unit. La Grange is meeting and games will be posted on our Unit website: www.austinbridge.org

Ever wonder who reads the Scorecard? I have always read it, so I never really wondered about this! In one of our Board meetings, I found out that we can "opt out" of receiving a printed, mailed copy. Didn't know that! Also found out that some of our folks don't read the printed Scorecard because they want to read it online. The online version is in color! Ever see the pictures and not really get a good clear vision of the people? Well, let's just say your group doesn't come out the best in the black and white version? Well, go to www.d16acbl.org/D16_Scorecard.html

Look the Scorecard up online and voila. Those photos from the events are in color! I never thought to bring this up because I thought everyone already knew this! Until the questions arise, it is impossible to address them! No question is too crazy. Someone knows the answer with a bit of digging! Ask, and we'll try to get the answer you need!

I was approached by two of our players. Seems they like it that I am trying to encourage folks to "pitch in" before/after a game, a sectional, a regional. Many hands do make light work. Emptying a trash can, picking up boards, cleaning off a playing area, pushing in chairs, assisting with making coffee, cleaning dishes are tasks that I had to know it was okay to tackle. We are all in this bridge world together. We are volunteers and the few who get director pay are also volunteering their talents to run the games. A little dab will do ya, as the tv commercial used to say! Let's help by making it a point to do a little unexpected task for the overall good. It becomes fun once the first step is taken! Amazing! And always clean up your own stuff, don't leave it for a volunteer to take care of.

The BCA celebrates its twelfth anniversary. So happy we have the Bridge Center of Austin, a place to learn, play, eat snacks, and see friends! Unit 207 has fourteen clubs altogether and each club is important. The BCA hosts over half the bridge games in the Central Austin unit with over 500 tables a month and offers a comprehensive education program. Thanks to BCA club manager Mark McAllister, Board president Mike Harris, she-who-makes-things-happen Beth Tobias.

New game Senior Activity Center... see [austinbridge.org](http://www.austintexas.gov/department/senior-activity-center-lamar) for dates, some Fridays at 10:30
<http://www.austintexas.gov/department/senior-activity-center-lamar>

Austin Fall Sectional

Sep 21-24 2017
280 players 330 tables.

- 1 31.28 Virginia Noelke
- 2 31.28 Venkatrao Koneru
- 3 31.28 Donna Swarthout
- 4 31.28 Dave Swarthout
- 5 25.79 Pam LaShelle
- 6 24.22 Tobi Sokolow
- 7 23.00 Gary Powell
- 8 21.72 Scott Humphrey
- 9 20.01 Joe Black
- 10 19.32 Elizabeth Tobias

Thursday Morn Open Pairs-19.0 Tables / Based on 26 Tables A1. Tobi Sokolow-Claudette Hartman A2. Flora Pettit-Bob Bockemuehl BC1. Jay Jayakumar-Loren Nyer B2. Steven Andersen-Jane Collins C2. Spencer Ledlow-David Mead

Thursday Morn 299er Pairs-6.5 Tables ABC1. Bob Allen-Eric De Rouffignac ABC2. Ken Hanson-Curt Wyman

Thursday Morn Swiss Teams-15 Tables A1. Chris Compton-Greg Hinze-Ira Hessel-Linda Elmore A2/3 Charlene Sands-Virgil Massey-James La Fountain-Richard Clarke A2/3 Wiley McMinn III-George Watkins-Linda Anthony-Joe Black B1. Anita Albert-Joyce Cooper-Sheila Harrison-Harry Elliott B2/4 Charles Auffill-Danna Redford-Shirley Holland-Rieger B2/4 Sharon Dameron-Thomas Smith-Jerry Barrett-Gary Anderson B2/4 David McCarron-Mary McCarron-Barbara Hollahan-Nancy Dean C1. Elisabeth Kay-Charlotte Schuepbach-Mike Vivian-James Cuccia

Thursday Aft Open Pairs-18.5 Tables / Based on 26 Tables A1. Tobi Sokolow-Claudette Hartman A2. Jack Lacy-R Harry Akin B1. Gloria Wilson-Sanae Zaveloff B2. Liga Byrne-Marilyn Sharratt C1. Steven Hollahan-Julie Valentine C2. Costa Triantaphilides-Lazaro Brener

Thursday Aft 299er Pairs-7 Tables AB1. Rose Goodwin-David Goodwin AB2C1. Dana Sun-Peter Naimoli C2. Curt Wyman-Ken Hanson

Thursday Aft Swiss Teams-14 Tables A1/2 Venkatrao Koneru-Virginia Noelke-Dave Swarthout-Donna Swarthout A1/2 Virgil Massey-

Charlene Sands-James La Fountain-Richard Clarke B1. Thomas Smith-Jerry Barrett-Gary Anderson -Sharon Dameron B2. Anita Albert-Joyce Cooper -Sheila Harrison-Harry Elliott

Friday Morn Open Pairs-28.0 Tables / Based on 36 Tables A1. Chris Compton-Linda Elmore A2. Lawton Hutchison-Joe Black BC1. Sandra Helton-Dionne Green B2. Kathy McCabe-Paul Marino C2. Robert Auvenshine- Robert Immel

Friday Morn 299er Pairs-7.5 Tables 1. Curt Wyman-Eric De Rouffignac 2. Susan Breeding-Nancy Schiller

Friday Morn Swiss Teams-14 Tables A1. Venkatrao Koneru -Virginia Noelke -Dave Swarthout-Donna Swarthout A2/3 James La Fountain -Richard Ware -Richard Clarke-Bob Bockemuehl B2/3 Gary Powell-Marcia Powell-Charlene Sands-Virgil Massey C1. Preston Olivent-Carolyn Olivent -Michael Rainbird-David Goodwin C2. Rita Wiegenstein-Inez Grider-William McIndoo-Don Grider

Friday Aft Open Pairs-25.0 Tables / Based on 33 Tables A1. Gary Powell -Scott Humphrey A2. Pam LaShelle-Anne La Cour B1. Becky Ellisor-Buddy Ellisor B2. Gloria Wilson-Mark Miller C1. Sherrie Goodman -Jarek Langer C2. Costa Triantaphilides-Lazaro Brener

Friday Aft Swiss Teams-13 Tables A1/2 Venkatrao Koneru-Virginia Noelke-Dave Swarthout-Donna Swarthout A1/2 George Watkins-R Harry Akin-Neal Perlman-Kendall Early BC1. Elisabeth Kay-James Cuccia-Charlotte Schuepbach-Mike Vivian C2. Sharon Dameron-Jerry Barrett-Thomas Smith-Gary Anderson

Friday Aft 299er Pairs-7.0 Tables AB1. Maureen Barry-Joseph Barry AB2C1. Eric De Rouffignac-Bob Allen C2. Annetta Hughson-Lois Kertes

Saturday Morn Open Pairs-23.5 Tables / Based on 31 Tables A1. Robert Todd-Simone Scumpia A2. Gary Powell-Neal Perlman BC1. Don Grider-Inez Grider B2. Esther Ellis-Linda Griffith C2. Nola Ray-Kathleen Monahan

Saturday Morn Swiss Teams-14 Tables A1. David Goldfarb- Harry Elliott- James Andre-Lily Andre A2. Richard Ware-James La Fountain-

Charlene Sands- Virgil Massey B1. Julianne McKenna-Shelley Kempner-Suzanne Geib-Harry Ingham B2. Terri O'Brien-Sheila Harrison-Yaoguang Zhu-Anita Albert

Saturday Morn 299er Pairs-7.0 Tables AB1. Marie Russiello-Kathie Lewis AB2C1. Michael Rainbird-Nora Fallon C2. Eric Vangaasbeek -Burton Nichols

Saturday Aft Open Pairs-23.5 Tables / Based on 30 Tables A1. C David Mitchell-David Ticen A2/3 Thomas Corlett-Ethel Corlett A2/3 Swadesh Mahajan-Kalpana Sutaria B1. Nancy Joe-Shawn Drenning B2. Virginia Miller-Stephen Olson C1. Nola Ray-Kathleen Monahan C2. Diana Apgar-Dwight Silver

Saturday Aft 299er Pairs-5.5 Tables ABC1. Allura Dennison-Suzanne Miller ABC2. Eric Vangaasbeek-Burton Nichols

Saturday Aft Swiss Teams-12 Tables A1.. David Goldfarb-Harry Elliott-Lily Andre-James Andre A2.. Virginia Noelke Dave Swarthout-Donna Swarthout Newberry MI; Venkatrao Koneru San Antonio BC1. Anita Albert-Yaoguang Zhu-Sheila Harrison-Terri O'Brien B2. Sandra Stevens-Dolores Aquino-Sharon Campbell-Kathy Hughes

Sunday A/X/Y Swiss-19 Tables / Based on 35 Tables A1. Venkatrao Koneru-Virginia Noelke-Dave Swarthout-Donna Swarthout A2. Elizabeth Tobias-Paul Tobias-Geoff Blandy-Pam LaShelle XY1. Terry Richardson-Lawton Hutchison-Greg Schepens-Joe Black X2. Larry Davis-Robert Donathan-Nancy Joe-Shawn Drenning Y2.. Harry Ingham-Kalyan Venkat-Stephen Campbell-Lois Goodman

Sunday B Swiss Bracket 1-7 Tables 1. Anita Albert-Steven Andersen-Terri O'Brien-Arthur Widen 2. Richard Frankeny-Diana Frankeny-Ken MacMorran-Sharon MacMorran

Sunday B Swiss Bracket 2-9 Tables 1. Robert Tyler-Gloria Wilson-Kathryn Levihn-Mark Anderson 2. Matt Stephans-Dana Sun-Peter Naimoli-David Staab

AUSTIN SEPTEMBER SECTIONAL CHAMPS



Thursday AM & PM Open Pairs A
Claudette Hartman, Tobi Sokolow



Thursday PM-Swiss Teams (tie)
Charlene Sands, Richard Clarke,
James LaFountain, Virgil Massey



Friday AM Open Pairs Flt A
Scott Humphrey, Gary Powell



Thu PM (tie) Fri AM & PM Swiss Team A
Sunday Swiss Team A
Donna Swarthout, Venkatrao Koneru,
Virginia Noelke, Dave Swarthout



Saturday AM Pairs Flt A
Robert Todd, Simone Scumpia



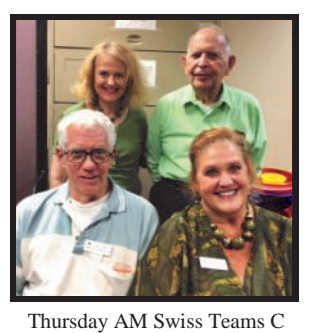
Saturday PM Pairs Flt A
C David Mitchell, David Ticen



Saturday AM & PM Swiss Teams Flt A
David Goldfarb, Lily Andre,
Harry Elliott, James Andre



Thursday AM Open Pairs B
Gloria Wilson, Sanae Zaveloff



Thursday AM Swiss Teams C
Friday PM Swiss Teams, B & C
Charlotte Schuepbach, Mike Vivian,
Elizabeth Kay



Friday AM-Swiss Teams Flts B&C
Carolyn & Preston Olivent



Thursday Morning Swiss Teams B
Sheila Harrison, Anita Albert,
Harry Elliott, Joyce Cooper



Saturday AM-Swiss Teams Flt B
Harry Ingham, Julianne McKenna,
Suzanne Geib, Shelley Kempner



Saturday PM-Swiss Teams B&C
Terri O'Brien, Sheila Harrison,,
Anita Albert, Yaoguang Zhu



Saturday PM Pairs Flt B
Shawn Drenning, Nancy Joe



Sunday Swiss Flts X & Y
Lawton Hutchison, Greg Schepens,
Terry Richardson



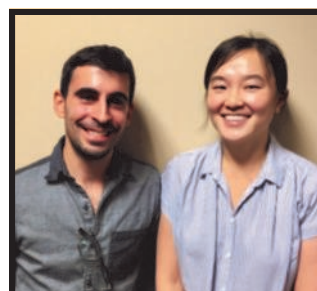
Sunday B,C,D Bracketed Swiss Brkt 1
Terri O'Brien, Art Widen,
Steven Anderson, Anita Albert



Sunday B,C,D Bracketed Swiss Brkt 2
Robert Tyler, Gloria Wilson Kathryn
Levihh, Mark Anderson



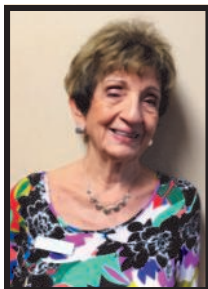
Friday PM-299ers
Joseph & Maureen Barry



Thursday PM-299ers
Peter Naimoli, Dana Sun



Thursday PM-299ers
David & Rose Goodwin



Saturday AM-299ers
Marie Russiello



Thursday AM 299ers
Eric De Rouffignac, Bob Allen




Saturday AM 299ers
Michael Rainbird, Nora Fallon



Saturday PM-299ers
Suzanne Miller, Allura Dennison

Unit 209
Permian Basin



Ann Parish

We've had lots of winners and celebrations in the last couple of months. On July 4, **Charlie Grimes** and his brother **Robert Grimes** won big-time in the ACBL-wide International Fund Game. With a 69.91% game, they were first in the district and 4th in the nation. Congratulations, guys!

On August 18, we celebrated new Life Master **Marlene Blumentritt** with a catered luncheon at Midland Country Club. After lunch, ten tables played a little bridge. The winners N/S were **Marilyn Higgins** and **Marty Massie**, and E/W were **Charlie Grimes** and **Robert Grimes**.

Both Midland and Odessa celebrated Labor Day with parties. Midland had a hotdog party, with winners in A **Charlie Grimes** and **Ann Servatius**, B **Deborah Brookins** and **Stewart Doreen**, and C **Kay Sewell** and **Linda Scarpelli**. Odessa celebrated with a potluck luncheon, followed by an International Fund Game. First in A and B were **Debra Jones** and **Mike Robinson**, and second in A and B were **Mike Schlueter** and **Scott Vaughan**.

On September 9, the Allison Bridge Center hosted the two-session NAP game. We had eight tables, and lunch catered by Jojo's Eatery. Winners were N/S 1st **Debbie Conly** and **KC Evans**. 2nd were **Charlie Grimes** and **Ann Servatius**. E/W winners were 1st **Joan LaFond** and **Beverly Taylor** and 2nd **Shirley Davenport** and **LaDoyce Lambert**.

Seven Odessa players headed to Carlsbad for their annual Sectional. **Shirley Davenport**, **Debra Jones**, **Mike Robinson**, **Mike Schlueter**, **Bob Schuler**, **Dolores Schuler**, and **Scott Vaughan** all tried to have some fun and win a few silver points in Carlsbad.

Following the Carlsbad tournament, **Mike Robinson** headed west to Arizona looking for gold (the in-the-stream kind, not the tournament kind). We hope to see him back at the bridge table in Odessa this winter. Midland has elected new officers. The new president is **Lionie Yee**. Thursday night games in Midland continue to be our biggest games, with 7-9 tables each week. The more experienced players partner with novice/intermediate players, so we have lots of practice and conversation and reminders.

We had four teams score 70%+:
August 17 - **Charlie Grimes** and **Robert Grimes** 73.70%
August 17 - **Paula Baggett** and **Dorothy Brennehan** 71.63%
August 25 - **Debbie Conly** and **KC Evans** 71.43%
September 19 - **Debbie Conly** and **KC Evans** 71.73%

Bridge lessons have started up again, with **Belle Harris** and **Ann Servatius** teaching beginning bridge and some conventions. The Saturday lessons started September 16 and will run

through December at Allison Bridge Center. The lessons are followed by a short game for beginners. **Bill Brooks** and **Kay Sewell** are working with Greenwood Middle School (in their shiny new building) to have lessons for 6th graders.

Personal news includes the move of **Lena Nichols** from Odessa to Manor Park in Midland. We look forward to seeing her more often at the Midland games.


Thought and prayers go out to **Gloria Crites** as she battles serious illness and to **Les Neal** as he recovers from surgery.

Our thoughts and sympathy go to the family of **Frances Mills**, a long-time bridge player and Life Master who died in September.

And on a happier note, **Patti Heard** is on a cruise to the Bahamas.

May we all shift into fall with cooler weather, wiser bids, and spectacular play of the cards!

Unit 225
East Texas



Greg Cooley

70% GAMES

Nannie's Bridge House reported that Rosemary Mize & Cary Hilliard had a 72.22% game on August 28. Brenda Baker & Emily Leake had 73% in an eight table game at Rose City DBC on August 18th. Helen Sullivan and Jean Huskey came in as big winners with a 70% game on 8/28 at the Lake Cypress Springs BC. In the middle of September, Bonnie Magee & Chester Neel had a 70.60% game. Diane Duncan & Tom Spradlin had a 70.24 percent game on Saturday, September 23 at LDBC. Congratulations, and way to go to all our seventy percenters.

UNIT 225

The Unit 225 general meeting and unit game was held Saturday, August 19th. President Gloria Rowland conducted business meeting, including election of 6 new board members. Following the general meeting, the board met and elected the following officers: Linda Harrison, President; Janie Wolaver, Vice President; Nancy Green, Treasurer; and Sandy Jenkins, Secretary. The remaining board members for 2017-2018 include: Sally McAnulty, Phyllis Alaverez, Barbara Bradford, Greg Cooley, Rick Davis, Jonathan Ernest, Carol Garza and Patsy Gordon.

Linda Harrison, Unit 225 President, looks forward to working with the board and unit members and welcomes your feedback and suggestions as we move forward with a busy year.

North American Pairs Qualifying Unit game will be held Sat, Oct 7th at Senior Citizen Bldg in Tyler.

Lake Country Sectional Tournament was held Sept 29, 30 and Oct 1st in Longview hosted by Pittsburg DBC and Lake Cypress Springs BC.

LAKE CYPRESS SPRINGS BC (LCSBC)-

NAP games were offered in August with extra red and black points going to the winners.

September games were all International Fund games with more opportunities for players to get extra black points.

Also, on Sept 11th Cliff Smith and Linda Harrison began teaching a 7-week free Duplicate Basic Bridge class. We had two new players join us, along with several tables of more seasoned players. We welcomed a new ACBL member, Greg Pesnell and new duplicate players, Millie Koch and Georgia Gibson.

PITTSBURG DBC (PDBC)-

August games were well attended with the club offering special games, including North American Pairs with extra red and black points for all of the winners.

Players had the opportunity to win extra black points in Sept as all games were International Fund games.

A ten-week "Conventions Class" started Sept 5 at 4PM just prior to the 5:30 Tuesday game. We have three tables attending.

Special thanks to PDBC and LCSBC for all the hard work and delicious food you provided at the first ever Lake Country Sectional Tournament Sept 29- Oct 1 in Longview. We had a great tournament with 134 total tables! Your East Texas Hospitality came through to the 139 players attending!
ROSE CITY DUPLICATE BRIDGE CLUB

The Rose City Duplicate Bridge Club lost a dear friend and member September 14, 2017 with the passing of Ed Stewart. Ed was known for his jokes and his annual birthday party with dinner entertainment and open bar. He will be greatly missed. He was 98 years old.

DOTTIE PIRKLES DBC

Dottie Pirkles DBC recently celebrated Mary Hinkle's attaining the ACBL rank of Gold Life Master. This rank is attained by reaching 2500 master points playing duplicate bridge. There were 11 tables in play with Chester Neel & Nelvin 1st with 59.95%, Carol Garza & Jean Roach 2nd with 56.71% and Beverly Battle & Jo Booth 3rd with 56.02%. Dick Hinkle furnished the ham & brisket from Danny's Bar B Que and a delicious cake from Cherry Laurel. Bridge players furnished a variety of yummy side dishes. The bridge club was decorated with gold table cloths, white place mats, and candle holders filled with gold flowers with miniature led lights. Mary was presented with a dozen yellow roses and a yellow orchid (gold could not be found)

Duplicate bridge players came together to say "THANK YOU" Nancy Strain. Ten years ago, Nancy decided

that the bridge players at Dottier Pickle Duplicate Bridge Club and local party bridge players deserved a nice place to play bridge. In January 2007 Nancy purchased a vacant lot just off the square in Athens, TX and build a beautiful building to insure that bridge players had a place to play the game we all love to hate. Fourteen tables of bridge players came together for a two-session Swiss game to honor Nancy and to celebrate ten years in the building. We have had as many as 27 tables of bridge players come to compete. There has been one wedding, and unfortunately several "Celebration of Life" events held at this beautiful building. We have also hosted several Non-Life Master Sectional and Open Sectional bridge tournaments in our building. For many years our building was the only new building built in down town Athens. The building that is now the "Nancy Strain Building" was established on January 26, 2007. THANK YOU NANCY FOR A SELFLESS ACT OF KINDNESS TO KEEP BRIDGE ALIVE IN ATHENS.\

DRIDGE STUDIO AT CEDAR CREEK

The Bridge Studio at Cedar Creek was well represented at the Lake Country Sectional in Longview at the end of September and quite a few of our players won silver. Cled & Peggy Painter came in 4th in a NLM pair game. In open pairs games, Chester Neel & Jimmy Wright came in 1st overall, Patsy Gordon & Barbara Bradford placed 1st in C, 7th overall, and Gail Beaupre & Mary Adams placed 4th in C. In Sunday's Swiss team games, Gloria Rowland, Evelyn Schmidt, Chester Neel & Jimmy Wright won 3rd place in the top bracket. Cled & Peggy Painter and Karen & Rick Davis came in 2nd place in the 3rd bracket. Congratulations to all of you!

Our director Barbara Williams & her partner Rachel Lee had a super game in late September and earned more than enough points for Barbara to become a Silver Life Master. Congratulations, Barbara!

Longview DBC

Please mark your calendars for February 15 to 17, 2018, for the Longview Piney Woods Sectional at the Holiday Inn. Mike Graham & Shirley Shelton are co chairs, with Nelda Avent in charge of Partnerships, & Janie Wolaver & Linda Harrison serving as Swiss Team coordinators.

Special prayers are requested for Sue Latham & Linda Baker, LDBC members who have undergone serious health challenges recently.

LDLC hosted a Life Master reception honoring Pat Cawley on Monday, October 9 at the studio.

Lake Country Sectional

Longview TX
Sep 29-Oct 01 2017
139 players.

Total attendance: 134 tables.

- 1 17.02 Stewart Angel
- 2 17.02 Jonathan Ernest
- 3 16.06 William Young III
- 4 16.06 Dorothy Nuttall
- 5 15.72 Puddin Barnes
- 6 15.72 J Bachman Nabors III
- 7 13.32 John Schwartz
- 8 13.32 James Thurtell
- 9 12.85 Jimmy Wright
- 10 12.85 Chester Neel Jr

Fri Morn Open Pairs-12.5 Tables /

Based on 22 Tables A1. James Thurtell-John Schwartz A2B1. Sammie Borum-Fred Borum B2. Carolyn Chapman-Diane Dunn C1. Patsy Gordon-Barbara Bradford C2. Pat Berry-Billy Jean Reasor

Fri Morn 499er NLM Pairs-9.0

Table A1. Susan Jennings-Steven Jennings A2BC1. Carol Kinsey-Alice Wilhite B2. Dorothy Miller-Jackie McElhaney C2. Jo Ann Zastovnik-Jeanette Shelton

Fri Aft Open Pairs-13.5 Tables /

Based on 24 Tables AB1. Ginny Jones-Mary Squyres A2. J Bachman Nabors III-Puddin Barnes B2. Gayle Mauldin-Peggy Singer C1. Rosemary Hardy-Lisa Looney C2. Vicki Angel-Lawrence Brough

Fri Aft 499er NLM Pairs-10.5

Tables AB1. Ann Haynes-J Denise Hull AB2. Curtis Bourland-Cassie Jean C1. Sarah Hillyer-Betty McMahan C2. Jo Ann Zastovnik-Jeanette Shelton

Sat Morn Open Pairs-15.5 Tables /

Based on 23 Table A1. J Bachman Nabors III-Puddin Barnes A2BC1. Wesley Crawford-Donald Gable Hervey B2. Shreedhara Ramarathnam -J Pat Craig C2. Vicki Angel-Troy Lankford

Sat Morn 499er NLM Pairs-7.5

Tables AB1. Ann Haynes-J Denise Hull AB2C1. Fredye Alford-Lawrence Brough C2. Sandra Jenkins -Janvan Jenkins

Sat Aft Open Pairs-15.5 Tables /

Based on 22 Tables AB1. Jimmy Wright -Chester Neel Jr A2. Dorothy Nuttall-William Young III B2. Khalifa Ahmed -Phillip Yorston C1. Charlie Kemp-Marjorie Kemp C2. Pat Berry-Billy Jean Reasor

Sat Aft 499er NLM Pairs-6.0

Tables AB1. Ann Haynes -J Denise Hull A2. Susan Jennings-Steven Jennings B2. Jackie McElhaney-Dorothy Miller

Sun Bracketed Swiss Bkt 1-7

Tables 1. Jonathan Ernest-Billy Leeper-Linda Spangler-Stewart Angel 2. William Young III-Dorothy Nuttall-Ike Hawkins Jr-Bobbye Goodman

Sun Bracketed Swiss Bkt 2-7

Tables 1. Sally McAnulty-Sue Ritschel-Sandra O Bannon-Cheryl Landers 2. Beryl Cobb-Donald Gill-Beth Hankins

Sun Bracketed Swiss Bkt 3-8

Tables 1. Jean Friedell-Mason Anderson-Bonnie Gorman-Betty Finney 2/3 Cled Painter-Peggy Painter-Rick Davis-Karen Davis 2/3 Ann Haynes-J Denise Hull-Patsy Alexander-Linda Tillery

LAKE COUNTRY SECTIONAL WINNERS



Saturday Morn Open Pairs A
J Bachman Nabors, Puddin Barnes



Friday Afternoon Open Pairs A
Diane Squyres, Ginny Jones



Sunday Swiss Team Bkt 1
Jonathan Ernest, Stewart Angel



Sunday Swiss Bkt 3
Mason Anderson, Jean Friedell,
Bonnie Gorman, Betty Finney



Friday Morn Open Pairs B
Fred & Sammie Borum



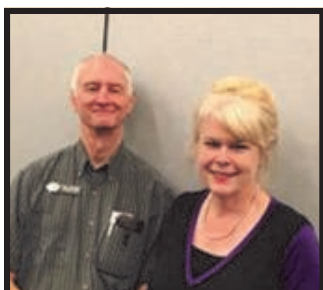
Saturday Afternoon Open Pairs A&B
Chester Neel, Jr., Jimmy Wright



Friday Morn 499er NLM Pairs
Carol Kinsey, Alice Wilhite



Friday Morn Open Pairs C
Barbara Bradford, Patsy Gordon



Friday Morning 499ers
Steven & Susan Jennings



Friday Morn 499er NLM Pairs
Sarah Hillyer, Betty McMahan



Sunday Swiss Bkt 2
Sandra O'Bannon, Cheryl Landers,
Sue Ritchel, Sally McAnulty



Friday Aft 499er NLM Pairs
Saturday Morn & Aft 499ers
Ann Haynes, Denise Hull



Palmview Sectional



December 15-17, 2017

Las Palmas Community Center
1921 N. 25th & E. Sycamore
McAllen, TX 78501
(956) 681-3350

Friday
Raindeer Open Pairs 9:30 am & 1:45 pm
Single Sessions
\$11.00 player per session

Saturday
Toyland Open Pairs 9:30 am & 1:45 pm
Single Sessions
\$11.00 player per session

Sunday
Santa's Swiss Team
10:00 am and TBA
\$25.00 per team member
All Events are Stratified (Average of both players)
A 2000+ B 750-2000 C 0-750

Complimentary Meal between Sessions
Beverages and Snacks available during sessions

Join Us Have Holiday Fun In the Valley

Tournament Chair:
Rene Wallace
(956) 454-1016

Partnership Chair:
Wayne Tindall
(785) 213-9453

ACBL Sanction Number #1712060
(\$3.00 extra per session for non-ACBL Members and Unpaid Members)

Unit 233
Central Texas

Helen Simonette

Thinking of holiday times from years past I can close my eyes and imagine the aroma of the turkey roasting in the oven. Memories are the wonderful gifts that can never be taken away. This is such a special time of the year when we give thanks as we pray for peace among all mankind. Shortly following Thanksgiving, Hanukkah begins on December 13 and lasts until December 20. *The Festival of Lights* is a special time for all Jews, especially the little ones. It commemorates the rededication of the Second Holy Temple in Jerusalem. Two weeks later we will then look forward to Christmas and the reunion of family and friends at such a warm and meaningful time of the year. As are the previously mentioned gifts, bridge is also a gift. Those who have never learned the game have missed the fun and many friendships found at the bridge table. Trying to research the origin of this game can be a frustrating experience. Some references state it began in ancient Persia, others claim it is Chinese while many believe it originated in Russia. Wherever it began becomes unimportant knowing the millions who have enjoyed the game. Bridge is a gift!

Unit 233 is especially proud that our own David Pennington received the District 16 Oswald and James Jacoby Service Award for 2017 honoring his outstanding contribution to the game of bridge. David served ten years on the District 16 Board. District 16 encompasses all of Texas and Mexico. In addition, he also managed several local clubs. David is a Temple native who was a high school band director for thirty-four years before retiring in 1994. The Cultural Activities Center in Temple immediately chose him to serve as their Executive Director, a position he held for more than eight years. He followed that by

serving two terms on the Temple Independent School District Board of Trustees. Those who have attended the Temple Sectional Tournaments have no doubt observed the many artistic creations that David made from used bridge cards. At one tournament a mural of a small town covered an entire wall and was made entirely of cards and David's creativity. His lovely wife, Linda, is always there as his number one fan and supporter.

Nell Carpenter of Waco is the newest Life Master in our unit having earned gold points at the Labor Day Regional in Dallas.

Unit 233 has had some high percentage games recently. Janice Walker and Jimmy LaFountain had a 77.08 game on August 28; Pat Kelly and Barbara scored 72.02 on September 6; Marie Provencher and Phyllis Gil- leland earned 73.45 on September 21, and also on that same day Janice McIntosh and Tom Corlett scored 73.81.

The scorecard is published six times annually. I began to write this column when the late Helen Levy gave up her twenty-six-year labor of love as secretary-treasurer and Scorecard columnist. It seems that in each issue since that time it has been a sorrowful duty to tell you we have lost another member of our bridge family. Betty Jean Cloud departed for the *land of glory* on September 28, 2017. We shall always cherish in our memories her beautiful face, sweet demeanor and her innate ability to successfully play for the overtricks. She and Janice Walker were bridge partners for more than fifty years. Surely Saint Peter is a bridge player! We shall all have something to which we can look forward!

Mark your calendar and grab your partner. The best lil' sectional tournament in Texas will be held February 16-18, 2018 at the Cultural Activities Center in Temple. Don't you dare miss this "best of the best"!

FYI...The hummers have departed to vacate in their winter home in Central America. 'Sure do miss them! Mark

your calendars for March 18, 2018. By that date make sure your two feeders are filled with nectar and hung on your favorite tree or deck awaiting their return!

Unit 353
Wichita Falls

Rosemary Barrington

On the front of our Declarer last month was a picture of a gaggle of geese flying across brightly colored fall leaves. Though fall has not graced our region yet, we do want to thank all of you lead flyers for making our Tournament such a success. Many came in from different regions such as Oklahoma City, Dallas, Plano, Union City, Bethany, Lawton, Holliday, Temple, Amarillo, Vernon, Yukon, Guthrie, Henrietta, Ft. Worth, Arlington, Chillicothe, Frisco, Altus, Cordell, Mountain View, Edmond, Iowa Park, and our own sweet Rose Van Meter from College Station. A wonderful gaggle of great bridge players and we do thank all of you. Total Masterpoints reported were 278.40.

There were many unsung heroes who worked selflessly to make it a success, among them were Pat Robinson, Lois Roberson, Wanda Gaynor, Robert Phillips, and Patty Hofer. They took the lead and broke the headwinds so we weaker flyers could come in too. Also I would like to honk out to our great Director Joan Paradeis for her great ability to put together a Tournament and execute it all so very well. Thank you all!!!

Meanwhile back at our tables Bridge Paradise Masterpoint Leaders were Margie Brown, 3.37 and Faye Morrison 3.37. High Percentage Games Leaders were Faye Morrison and Margie Brown 70.50.

Bridge Center Leaders were Dave Hertzog, 7.76 and Tomie John-

son, 6.39. High Percentage Game Leaders were Tomie Johnson and Dave Hertzog, 68.00 and Lois Roberson and Faye Morrison, 64.50.

Bridge-A-Gap Masterpoint Leaders were Margaret Kirkland, 3.38, and Joan Paradeis, 3.38. High Percentage Leaders were Margaret Kirkland and Joan Paradeis, 65.77.

Sweet 16 Bridge Masterpoint Leaders were Kathleen Brown, 7.61, and Clay Abrams, 62.50. High Percentage Leaders were Margaret Kirkland and Clay Abrams, 69.58.

My feathers are ruffled to all of you.

Unit 224
Fort Phantom

Bette Byrd

Unit 224 is busily preparing for Abilene's Harvest Sectional and I hope all of you attended. Darla Mawson, chairman, is working to make it full of fun, food, and great games as always.

Coleen Grisham directed an IN tournament in August, and being the first one held in several years, we were pleased with attendance. Bette Byrd called to set up partnerships.

In the morning session, winning first in A and B were Alan Wakefield, Richard Pike; second were Jeff Lewis and Mike Sadler; third in A and B and first in C were Lynn Reeves and Karen Vick; second in C were Bill and Maedene Armer.

In the afternoon session winning first in A and B were Jeff Lewis and Michael Sadler; second were Richard Pike and Alan Wakefield; third in A and B and first in C were Bill and Maedene Armer; second in C were Robin JULIEN, Phil Egdorf.

Between sessions, a wonderful meal was furnished by Barbara Bridges assisted by Gwen Riggs and Sue Patton.

The Sunday team game winners were first Jeff Lewis, Michael Sadler, Jerry Riggs, Jim Alvis; second Karen M Vick, Lynn Reeves, Beverly Joosten, Larry Robertson.

Everyone enjoyed the opportunity to play in an Intermediate/Novice tournament and we hope it encourages them to try the Harvest Sectional. Thank you to Coleen and her helpers

for volunteering their time.

Attending the Robinsonville Delta Deatin' Regional were Gwen Riggs and Barbara Bridges winning 7.53 points and Jerry Riggs and Jim Alvis winning 3.98. Carl and Coleen Grisham attended the Wichita Falls Sectional and placed on Friday morning for .93.

Over 70% games were Robert Patton and Beverly Walker on August 9, with a 70.83 with 3 1/2 tables. On August 10 Gwen Riggs and Barbara Bridges had 71.88 at Bridge Etc. with 5 tables. On August 24, Jim Alvis and Mary Len Swinney had 72% at the Thursday night game. Bob Young and Ed Grant logged a 70.67% on September 8 with 6 tables and a 70.83% on September 26, with 5 1/2 tables at Bridge Etc. Pat Ramsey and Carol Whitten had 71.53% on Friday September 29 at Fort Phantom Friday game with 4 1/2 tables. Congratulations to all of you for good bridge.

An Eight is Enough team game was held on September 30, with seven teams. It ended in a tie between Coyita Bowker, Melba Long, Bill and Rosemary Johnson's team and Jo Smith, Pat Ramsey, Alan Wakefield, Mike Sadler's team. Third were Robert and Sue Patton, Margie Dawley and Betty Henderson.

LOOKING BACK:

Sweetwater team went to Ruidoso and brought back a bag of gold. Bette Byrd, Debbie May, Johnye VanDever and Anne Spittler won two knockout events to garner more than 20 gold. This was enough to make Anne her Life Master. The Regional tournament was a success for four Abilene players. Dale Lain, Martyne Turner, Bea Duggan and Jackie Sonnenburg finished their requirement in gold to become Life Masters. The carpet had been cleaned during the tournament and looks very nice. Abilene Duplicate hosted the annual Thanksgiving dinner on Monday. Jeanne Britton and Ginny Wisdom were in charge. From December: Coleen Palmer (now Grisham) and Pat Ramsey won the ACBL District Charity game with a 57.78% game. Nominees for the 1998 board of directors were named: Jeane Britton, Ed Grant, Sylvia Ferris, Pat Ramsey and Ginny Wisdom

Thanks, Bette Byrd

Lone Star Regional

Monday, January 29

Charity Pairs (Single Sessions)----- 2:30 & 7:30
 Afternoon Side Game Series ----- 2:30
 49'r & 299'r Pairs (Single Sessions) -----2:30 & 7:30
 0-5 Pairs (Single Sessions) ----- 2:30 & 7:30
 Bracketed Swiss Teams (Double session) - 2:30 & 7:30
 KO #1 (Session 1) -----7:30

Tuesday, January 30

A/Ax Pairs (Double session) ----- 10:00 & 2:30
 Mid-flight Pairs (Double session)- - 10:00 & 2:30
 Gold Rush Pairs (Double session) 10:00 & 2:30
 Morning Side Game Series ----- 10:00
 299'r Pairs (Single Sessions) ----- 10:00 & 2:30 & 7:30
 49'r Pairs (Single Sessions) ----- 10:00 & 2:30
 0-5 Pairs (Single Sessions) ----- 10:00 & 2:30
 KO #1 (sessions 2 & 3) ----- 10:00 & 2:30
 Afternoon Side Game Series ----- 2:30
 Stratified Swiss (Single session) - - - - 2:30
 Bracketed Swiss (Double session) 10:00 & 2:30
 KO #2 (Session 1 of 3) ----- 7:30
 Evening Side Game Series -- ----- 7:30

Wednesday, January 31

Championship Pairs (Qual. Sess) 10:00 & 2:30
 A/X/Y Pairs (Double session) 10:00 & 2:30
 Gold Rush Pairs (Double session)- 10:00 & 2:30
 Morning Side Game Series ----- 10:00
 299'r Pairs (Single Sessions) ----- 10:00 & 2:30 & 7:30
 49'r Pairs (Single Sessions) --- 10:00 & 2:30
 0-5 Pairs (Single Sessions) ----- 10:00 & 2:30
 KO #2 (sessions 2 & 3) ----- 10:00 & 2:30
 Afternoon Side Game Series ----- 2:30
 Stratified Swiss (Single session) ----- 2:30
 Bracketed Swiss (Double session) -10:00 & 2:30
 KO #3 (Session 1 of 3) - - - - - 7:30
 Evening Side Game Series ----- 7:30

Stratification & Flighting

Stratified Events A:2500+ B:750-2500 C:0-750
 A/X Pairs A:5000+ Ax 0-5000 (A & Ax play together)
 Midflight Pairs B:1500-3000 Bx:0-1500 (B & Bx play together)
 Gold Rush Pairs C:300-750 Cx:0-300 (C & Cx play together)
 A/X/Y Pairs A:5000+ X 2000-5000 Y 0-2000
 Strati-Flighted Swiss A:4000+ Ax 0-4000 (A & Ax play together)
 B:0-2500 (Bracketed – no player over 2500 MPs)
 Bracketed Swiss Brackets of 7-9 teams by average MP

Thursday, February 1

Championship Pairs (Finals) 10:00 & 2:30
 A/X/Y Pairs (Double session) - - - 10:00 & 2:30
 Gold Rush Pairs (Double session) 10:00 & 2:30
 Morning Side Game Series ----- 10:00
 299'r Pairs (Single Sessions) --- 10:00 & 2:30 & 7:30
 49'r Pairs (Single Sessions) --- 10:00 & 2:30
 0-5 Pairs (Single Sessions) ----- 10:00 & 2:30
 KO #3 (sessions 2 & 3) ----- 10:00 & 2:30
 Afternoon Side Game Series ----- 2:30
 Stratified Swiss (Single session) ----- 2:30
 Bracketed Swiss (Double session) -10:00 & 2:30
 KO #4 (Session 1 of 3) - - - - - 7:30
 Evening Side Game Series ----- 7:30

Friday, February 2

A/Ax Pairs (Double session) --- 10:00 & 2:30
 Mid-flight Pairs (Double session)- - 10:00 & 2:30
 Gold Rush Pairs (Double session) 10:00 & 2:30
 Morning Side Game Series ----- 10:00
 299'r Pairs (Single Sessions) ----- 10:00 & 2:30 & 7:30
 49'r Pairs (Single Sessions) ----- 10:00 & 2:30
 0-5 Pairs (Single Sessions) ----- 10:00 & 2:30
 KO #4 (sessions 2 & 3) ----- 10:00 & 2:30
 Afternoon Side Game Series ----- 2:30
 Stratified Swiss (Single session) ----- 2:30
 Bracketed Swiss (Double session) 10:00 & 2:30
 KO #5 (Session 1 of 4) ----- 7:30
 Evening Side Game Series ----- 7:30

Saturday February 3

A/Ax Pairs (Double session) --- 10:00 & 2:30
 Mid-flight Pairs (Double session)- - 10:00 & 2:30
 Gold Rush Pairs (Double session) 10:00 & 2:30
 Morning Side Game Series ----- 10:00
 299'r Pairs (Single Sessions) --- 10:00 & 2:30 & 7:30
 49'r Pairs (Single Sessions) --- 10:00 & 2:30
 0-5 Pairs (Single Sessions) ----- 10:00 & 2:30
 KO #5 (sessions 2, 3 & 4) ----- 10:00 & 2:30 & 7:30
 Afternoon Side Game Series ----- 2:30
 Stratified Swiss (Single session) - - - - 2:30
 Bracketed Swiss (Double session) 10:00 & 2:30
 Evening Side Game Series ----- 7:30

SUPER BOWL Sunday, February 4

A/X/Y Pairs (Double session) - - - - - 9:30 & TBA
 Morning/Afternoon Side Series (Single Sessions) 9:30 & T
 A/Ax Swiss Teams ----- 9:30 & TBA
 Bracketed Swiss Teams ----- 9:30 & TBA

(No Player with >2500 MPs)



NOTE 9:30AM!!
DIFFERENT STARTING TIME!!
WE WILL GET YOU HOME FOR
SUPER BOWL PARTIES

Version 10/4/2017

CLUB DIRECTOR'S COURSE

Jan 27-29, 2018

Saturday & Sunday Noon – 9PM Monday 9AM Test

Contact Bill Riley

ichibanbill@yahoo.com 832-289-3833

JANUARY 29 – FEBRUARY 4 2018

Lone Star Regional

**Houston UNIT 174 proudly presents the 57th annual LSR
EXCITING NEW SCHEDULE AND EVENTS!!**

MARRIOTT HOUSTON WESTCHASE

2900 Briar Park Drive Houston TX 77042

NEWLY RENOVATED

Reservations 713-978-7400 888-236-2427

ROOM RATE \$119 /Cut off Date January 19, 2018

INTERMEDIATE – NEWCOMER SCHEDULE

0-5, 49'r & 299'r pairs Monday @2:30 & 7:30

0-5 & 49'r pairs Tuesday-Saturday @10 & 2:30

299'r pairs Tuesday-Saturday @10,2:30 & 7:30



Trophy awarded to player with most points from I/N games at tournament between sessions on Sunday.

NEW!!! Review of 1-2 hands after 2:30 session

Red points awarded in these events

I/N Chair Nancy Guthrie

nguthrie_houston1@comcast.net

DAILY LECTURES AT 2:00



0-750 PLAYERS LOOKING FOR THOSE ELUSIVE GOLD POINTS?

Try Gold Rush Pairs or play in Bracketed Swiss Events (Top 4 teams in each bracket win GOLD)

GREAT HOSPITALITY



Door Prizes from nearby restaurants within walking distance

Check schedule for snacks each day.

Get your great gift at hospitality desk.

Free labels are back this year!

Tournament Co-Chairs

Nancy Strohmer 713-882-0626

nastrohmer@yahoo.com

Ken Hudson 281-488-1781

kghudson@comcast.net

NEW BIG TEXAN!!!!!!

CHAMPIONSHIP PAIR GAME RAMPED UP POINTS!!

2 Session Qualifying Wednesday

2 Session Finals Thursday @10 & 2:30

\$\$\$\$ Cash Prize for 1st and 2nd places



GOLD RUSH PAIRS

Tuesday – Saturday
10:00 & 2:30



DAILY PAIR GAMES

Monday Charity Pair 2:30 & 7:30 (Single Sessions)

Tuesday A/X & Midflight 10 & 2:30 (2 Sessions)

Wednesday A/X/Y 10 & 2:30 +SEE ABOVE

Thursday A/X/Y 10 & 2:30 (2 Sessions)

Friday A/X & Midflight 10 & 2:30 (2 Sessions)

Saturday A/X & Midflight 10 & 2:30 (2 Sessions)

THREE SIDE SERIES GAMES

Best 2 games count toward overalls

Morning Series Tuesday-Sunday 10:00

Afternoon Series Monday-Sunday 2:30

Evening Series Monday-Saturday 7:30

CONTINUOUS TEAM GAMES

5 KOs starting daily @7:30

Daily Bracketed Swiss 10 & 2:30

Top bracket of KOs may be handicapped

ENTRY FEES

\$14 per session Monday – Friday

\$15 per session Saturday (1\$ for NABC)

\$16 per session Sunday (includes lunch)

\$4 more for non and unpaid ACBL members

PARTNERSHIPS

Contact Lauri Laufman

llaufman@texas2211.com